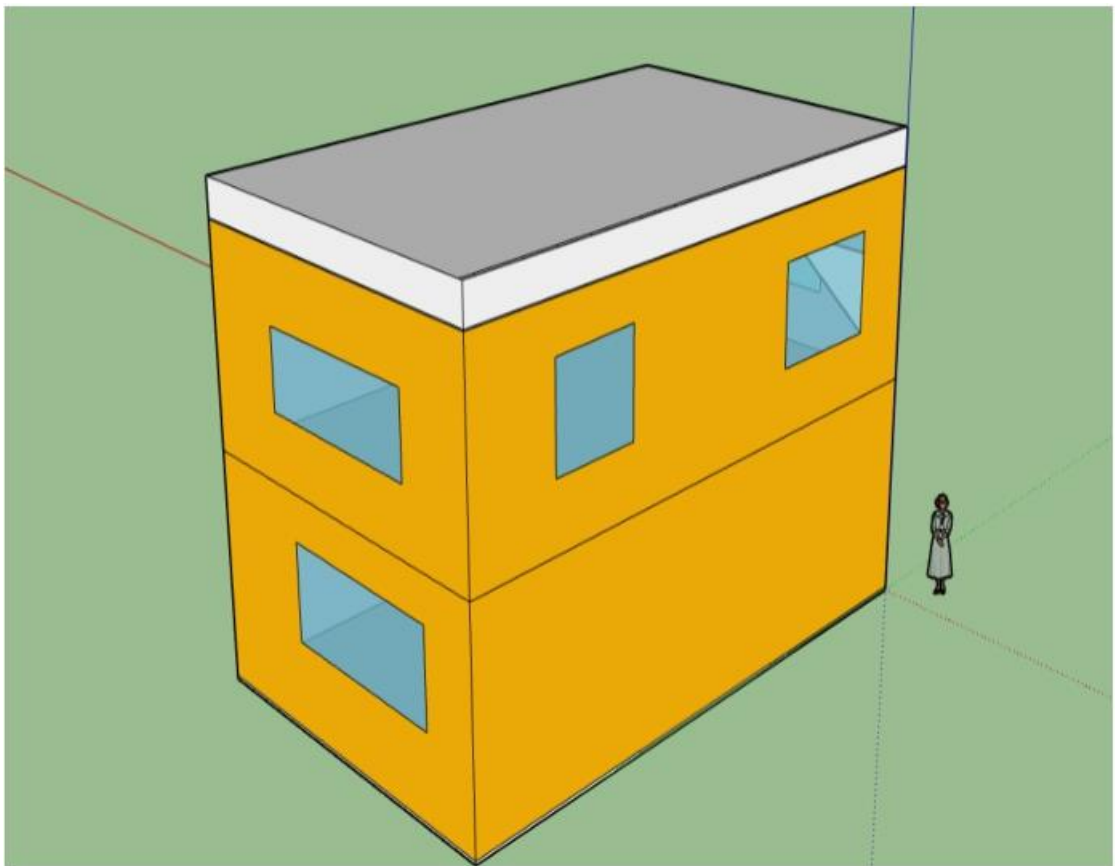
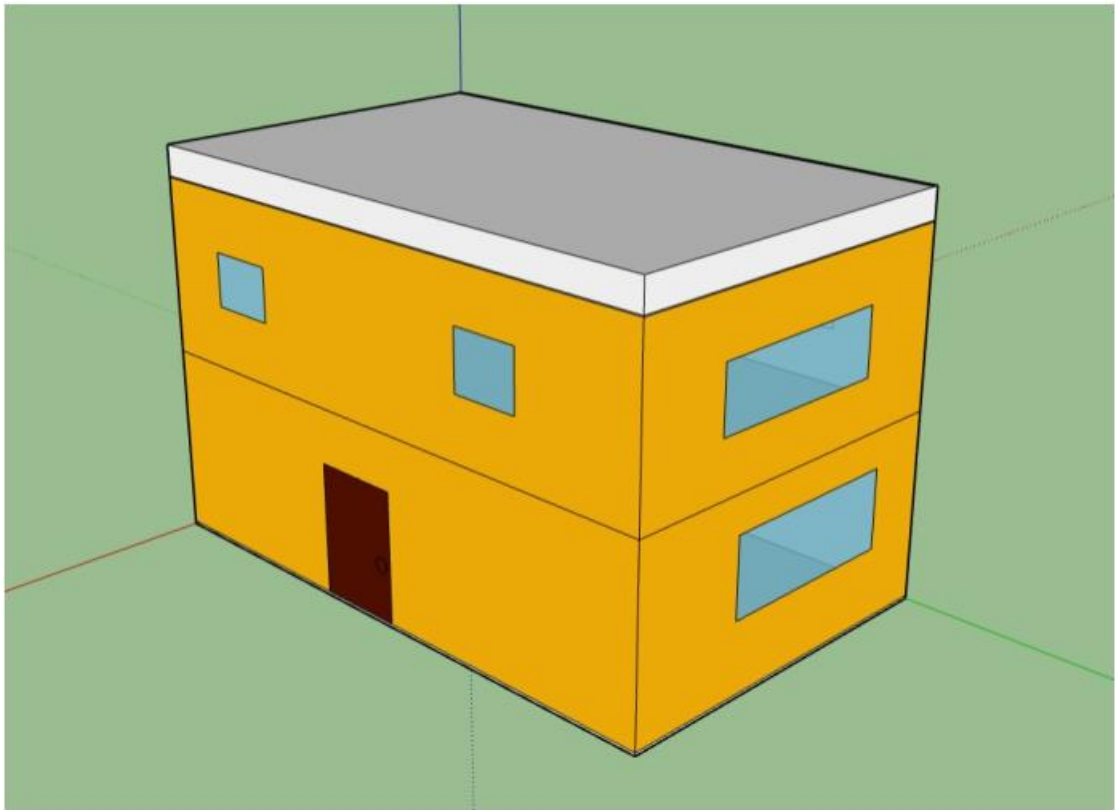


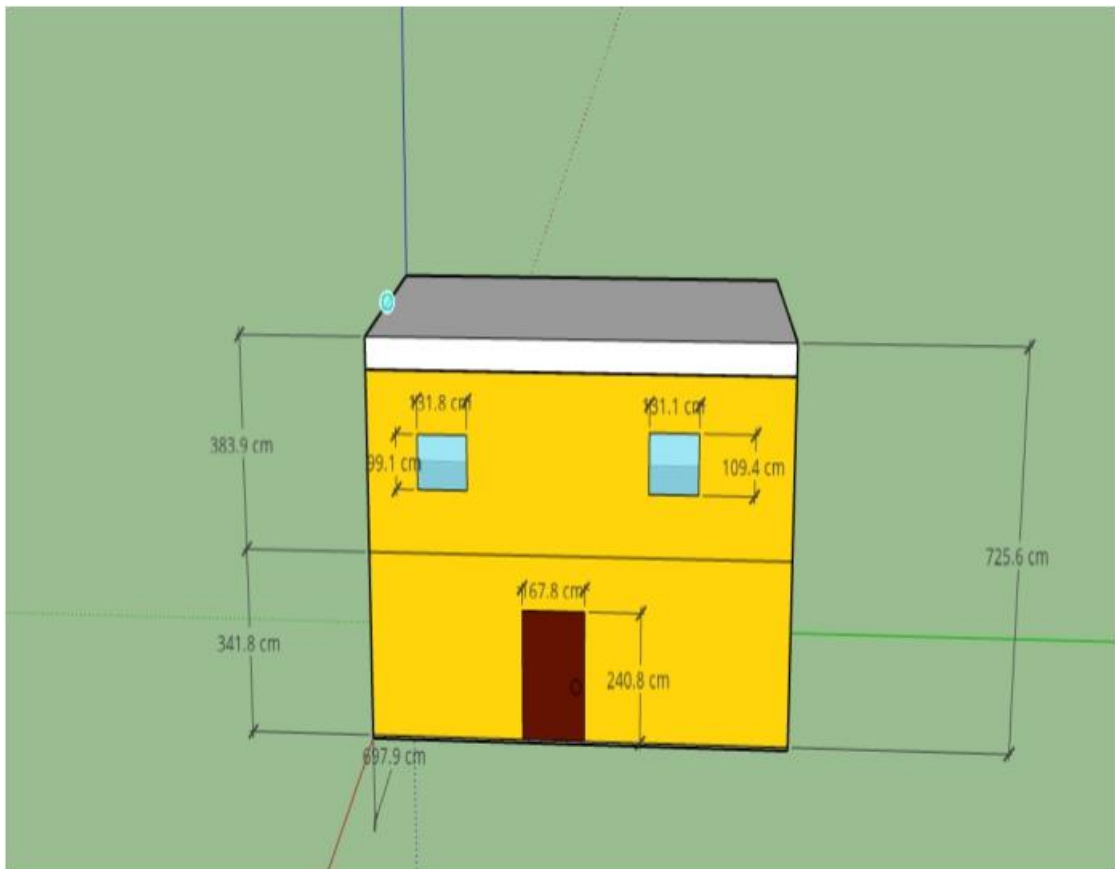
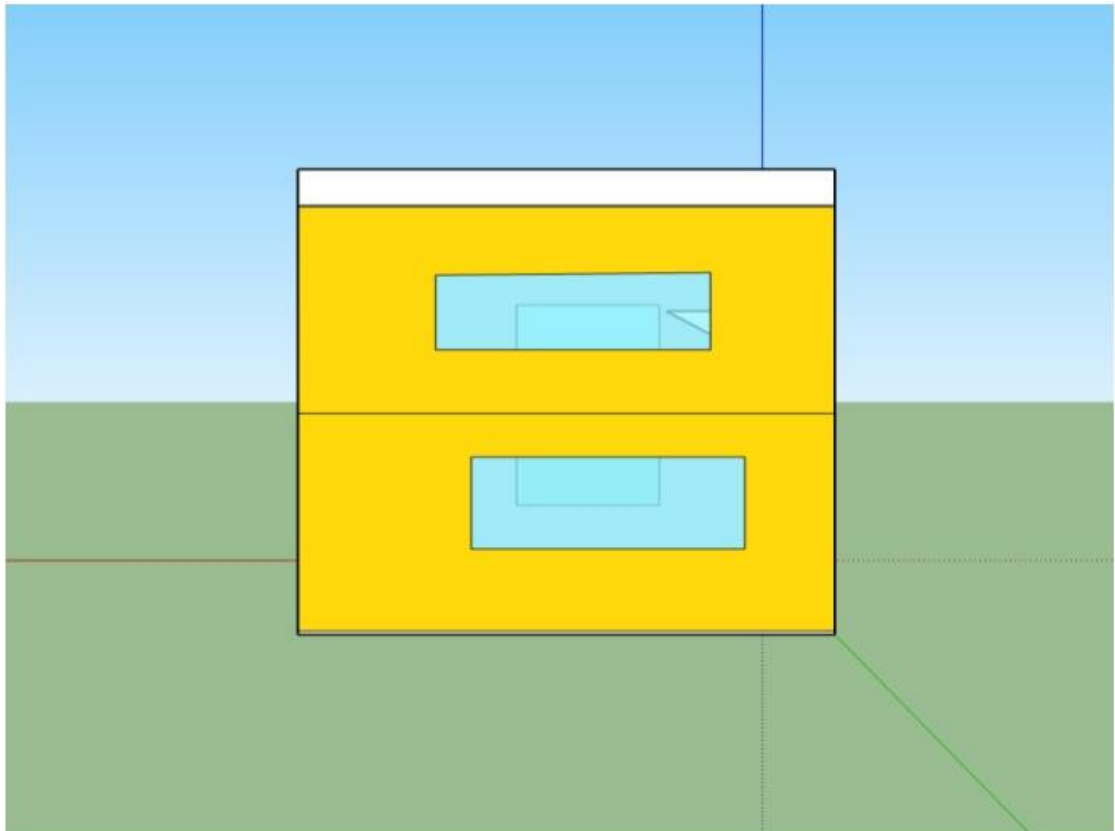
國立北斗家商 110 學年度

多媒體作品

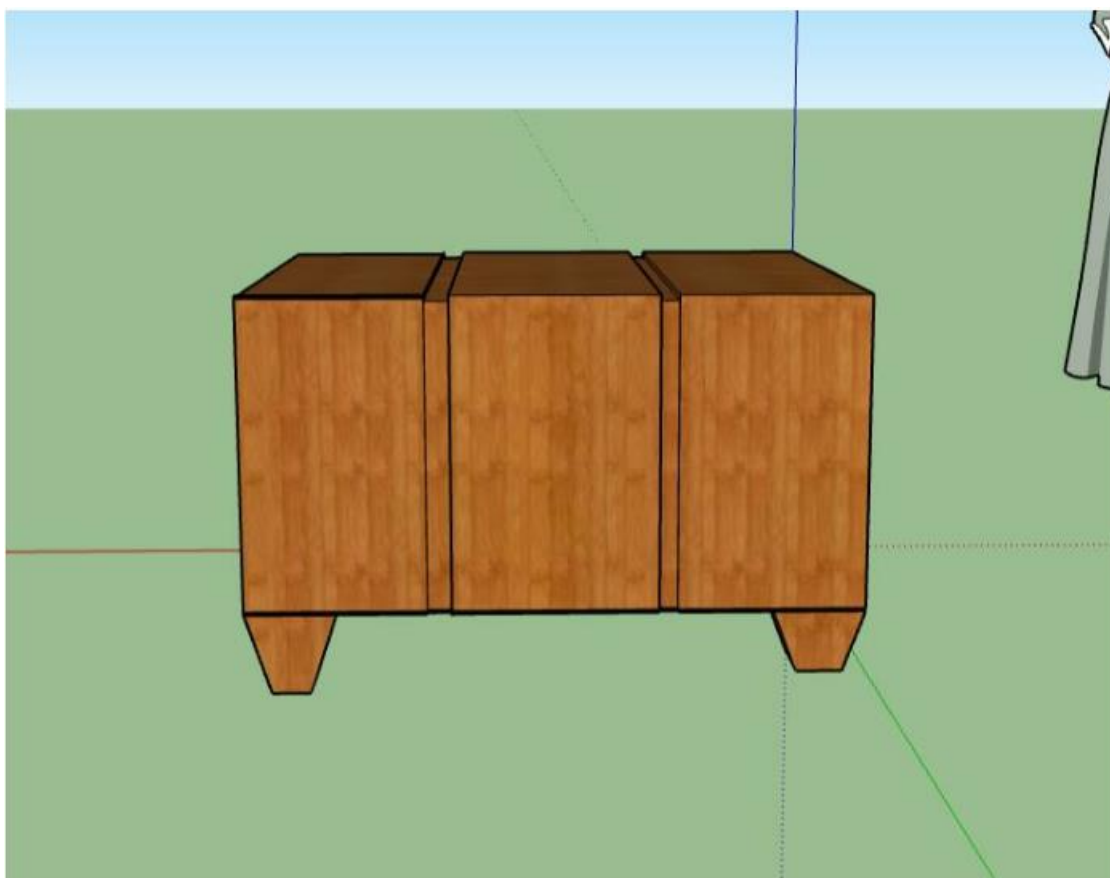
資二一顏榆庭

sketchup 作品 01：房子

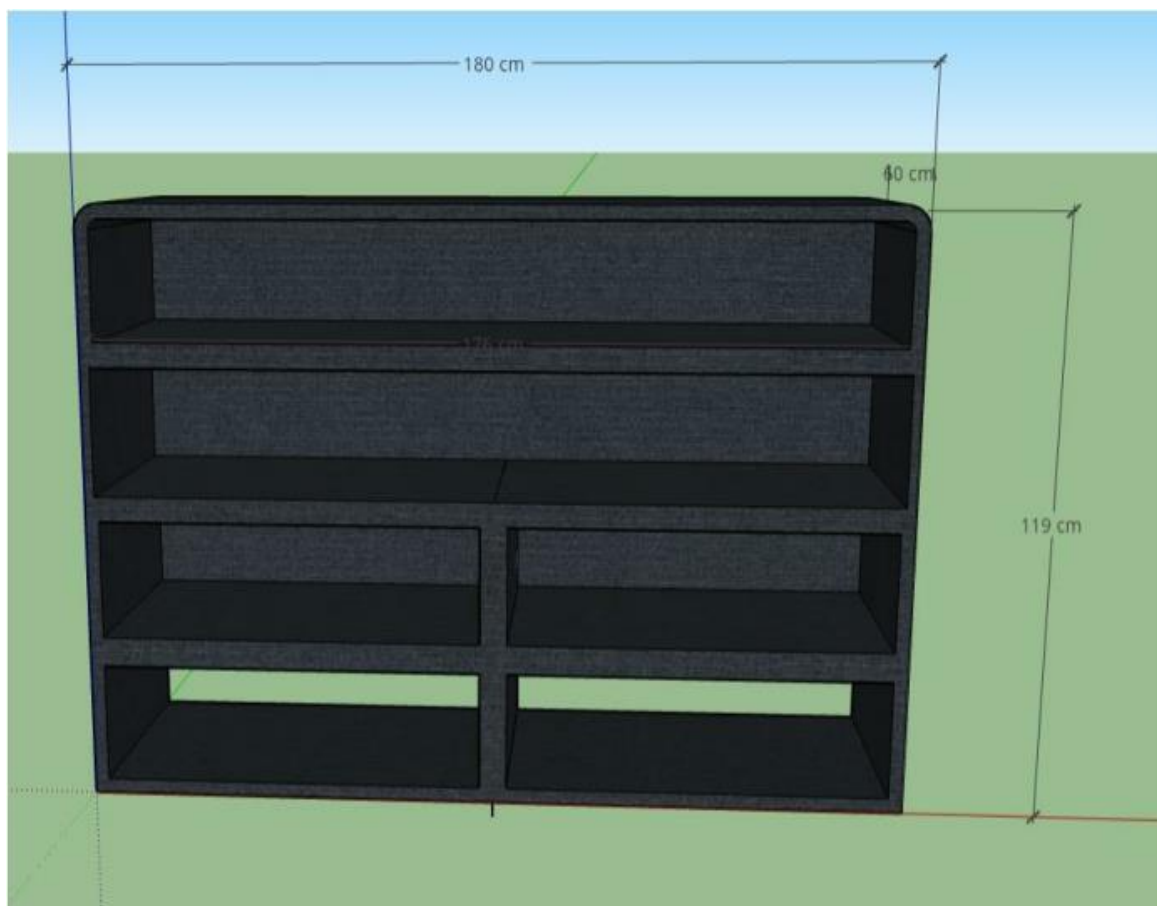
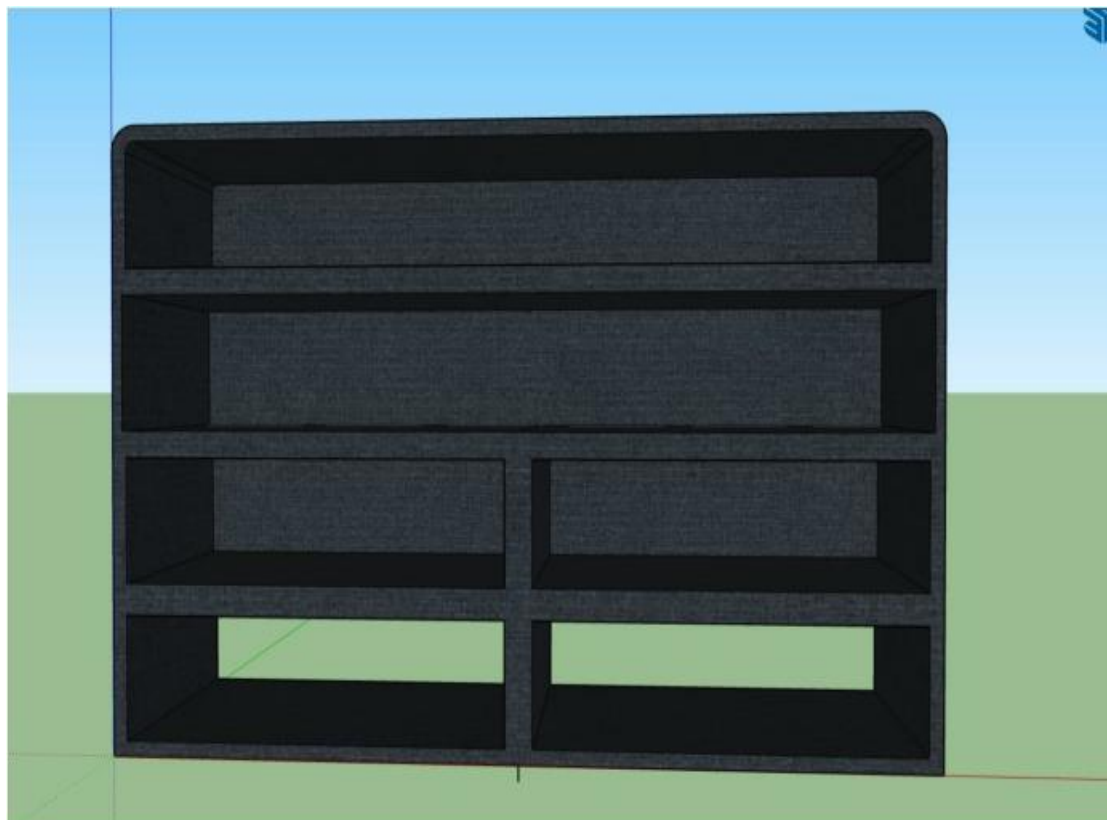




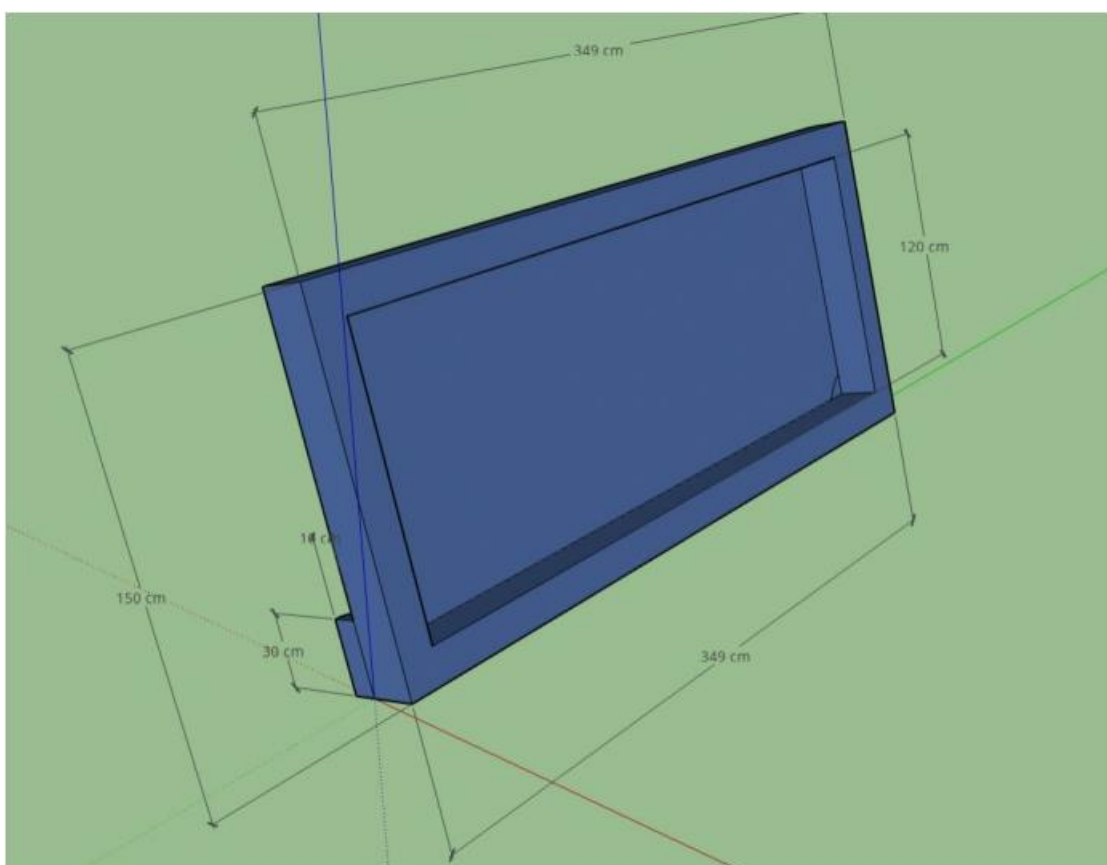
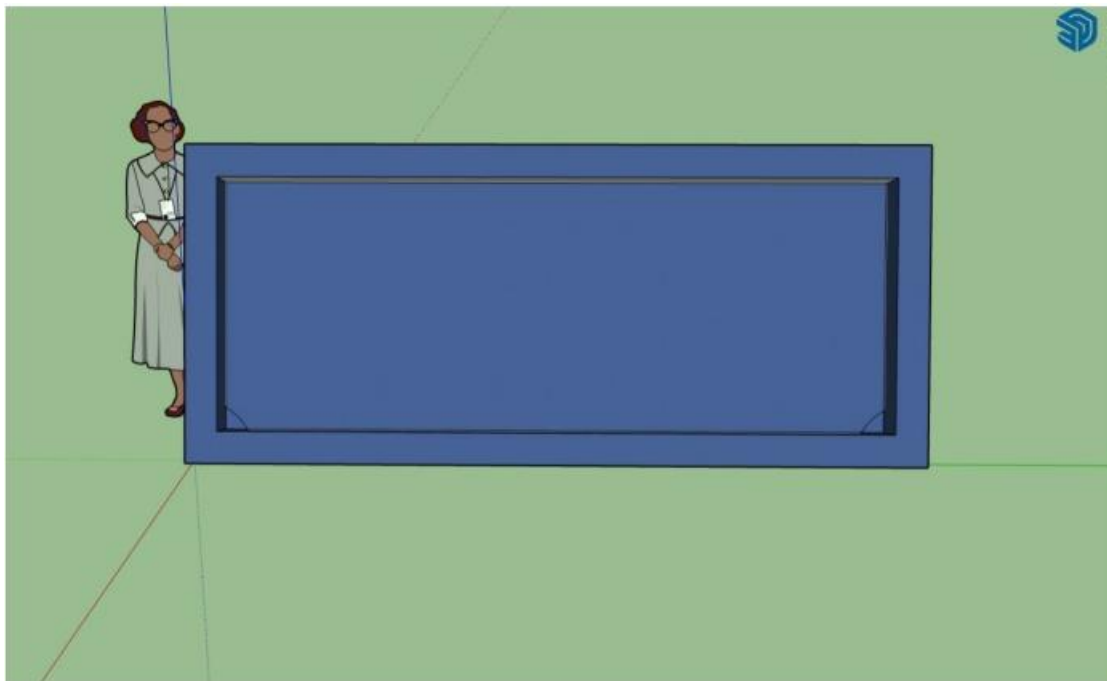
標題: sketchup 作品 02: 茶几



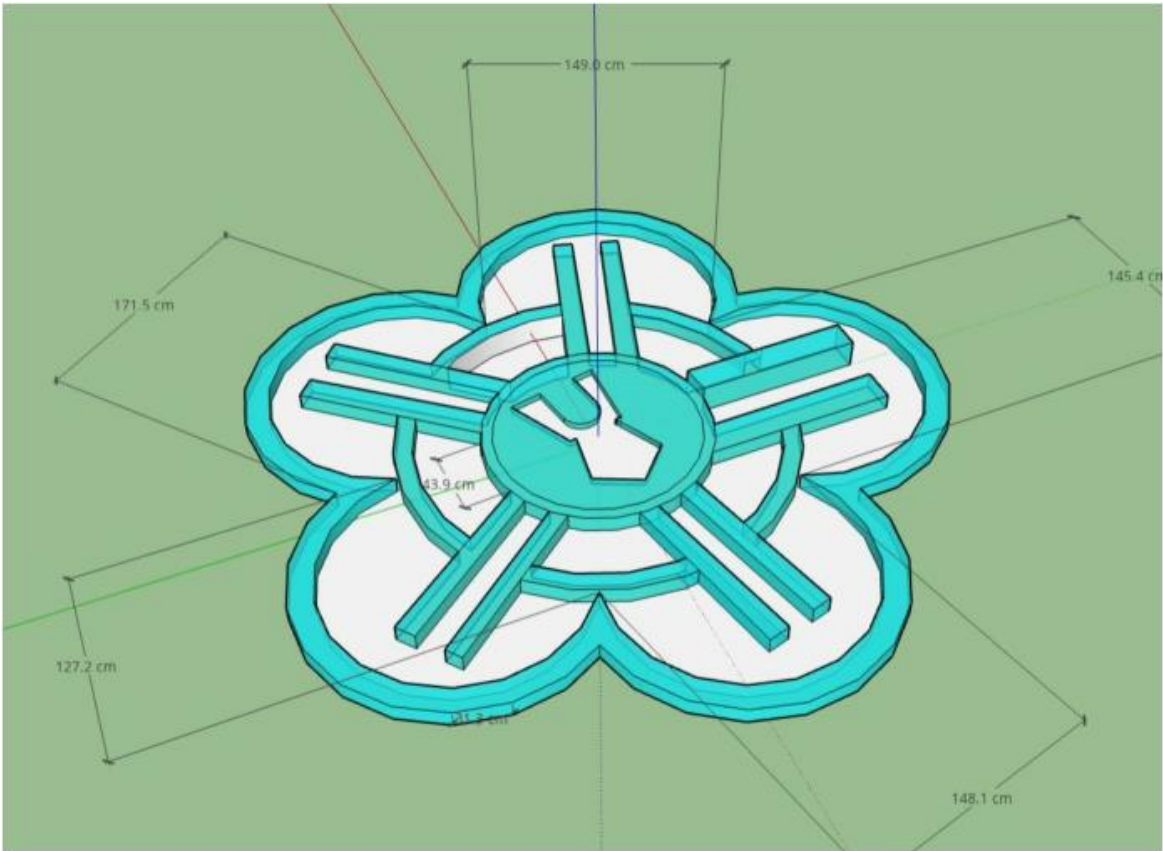
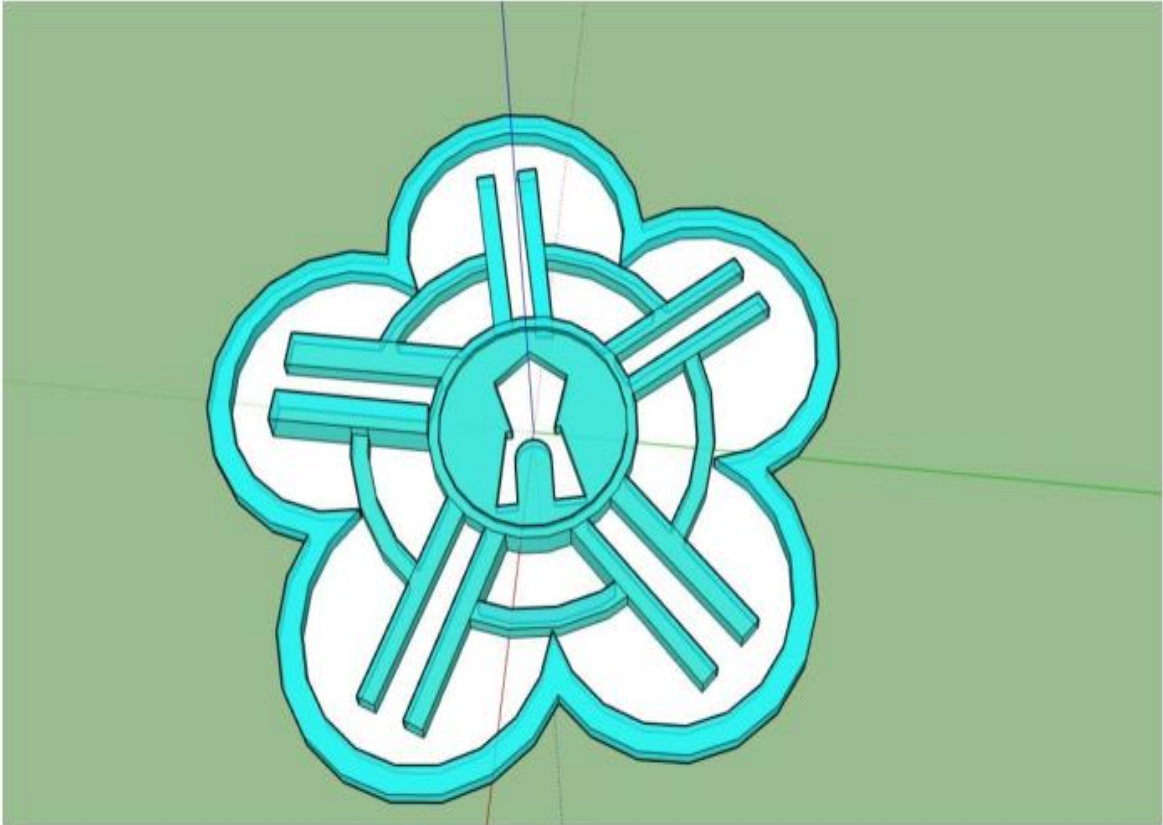
書櫃

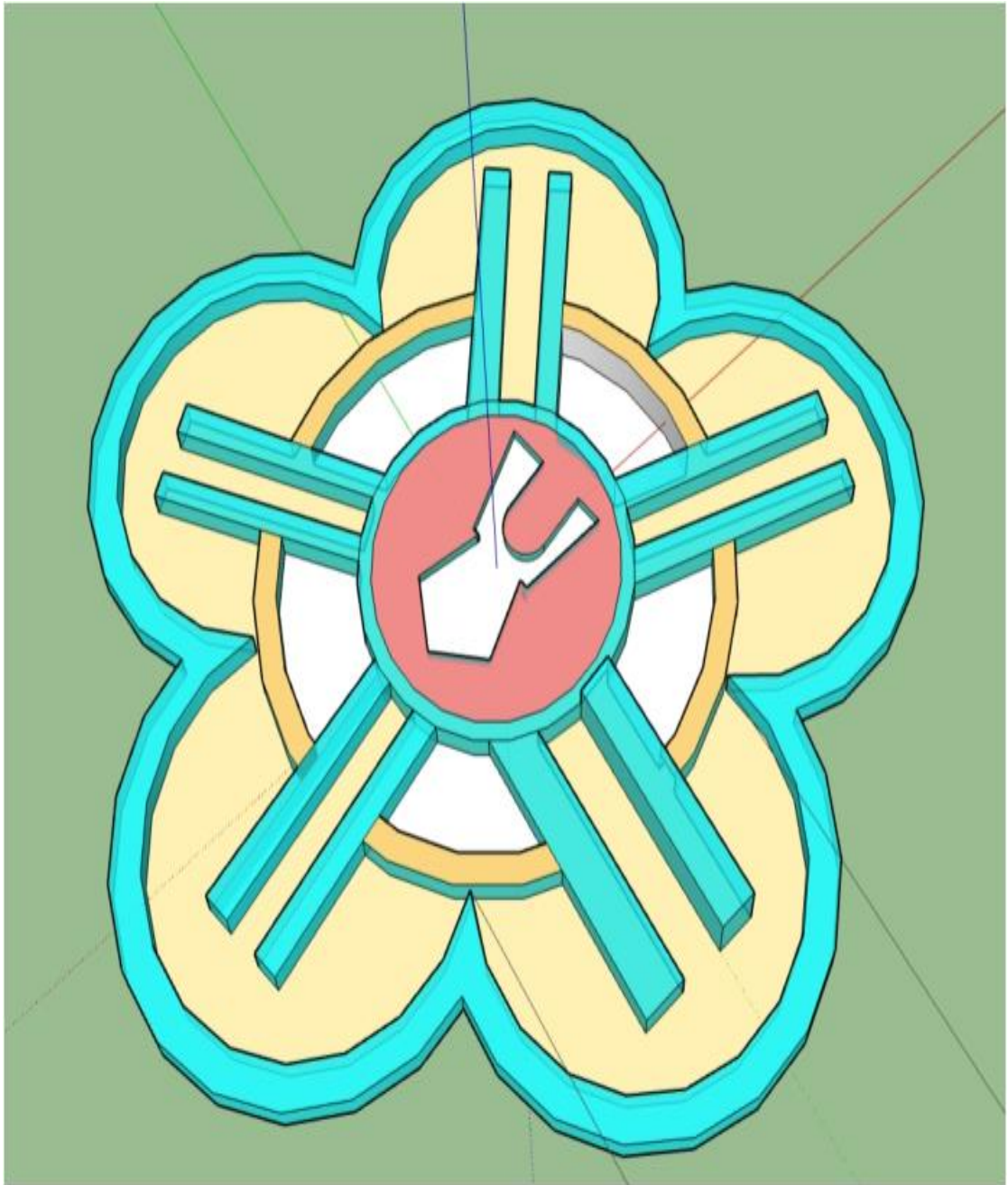


相框

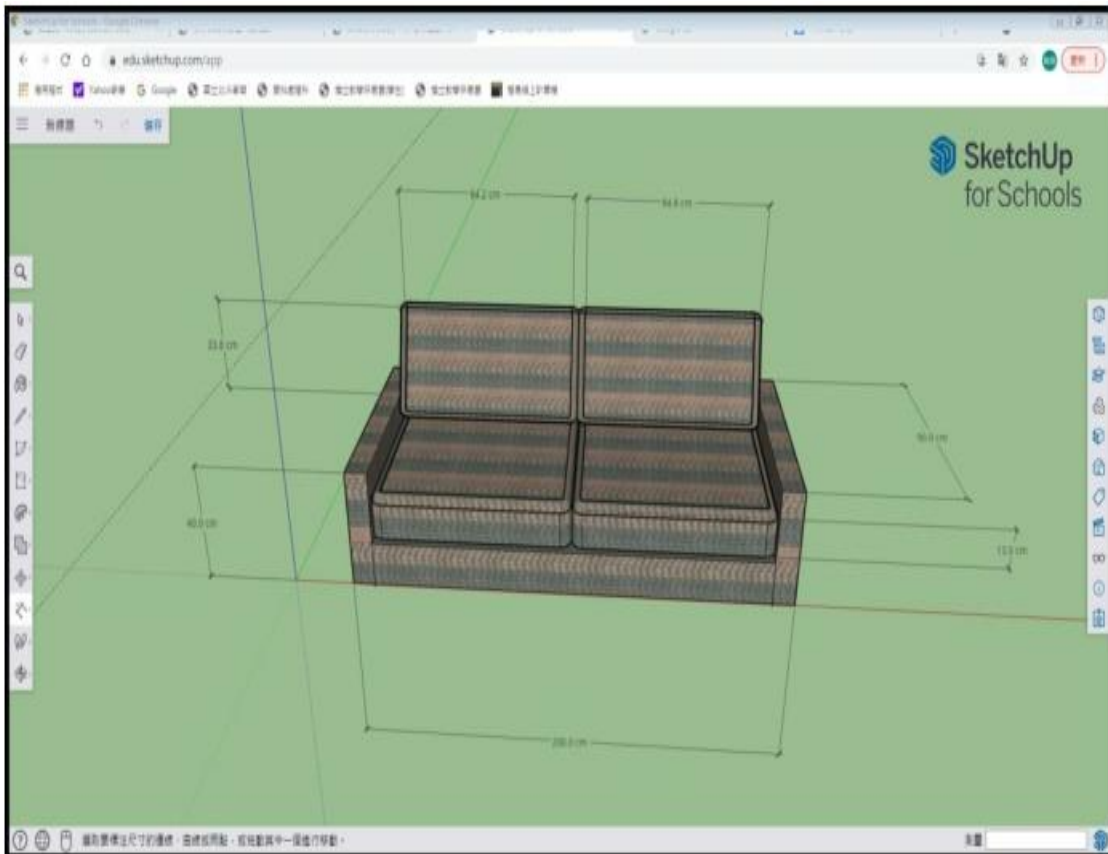
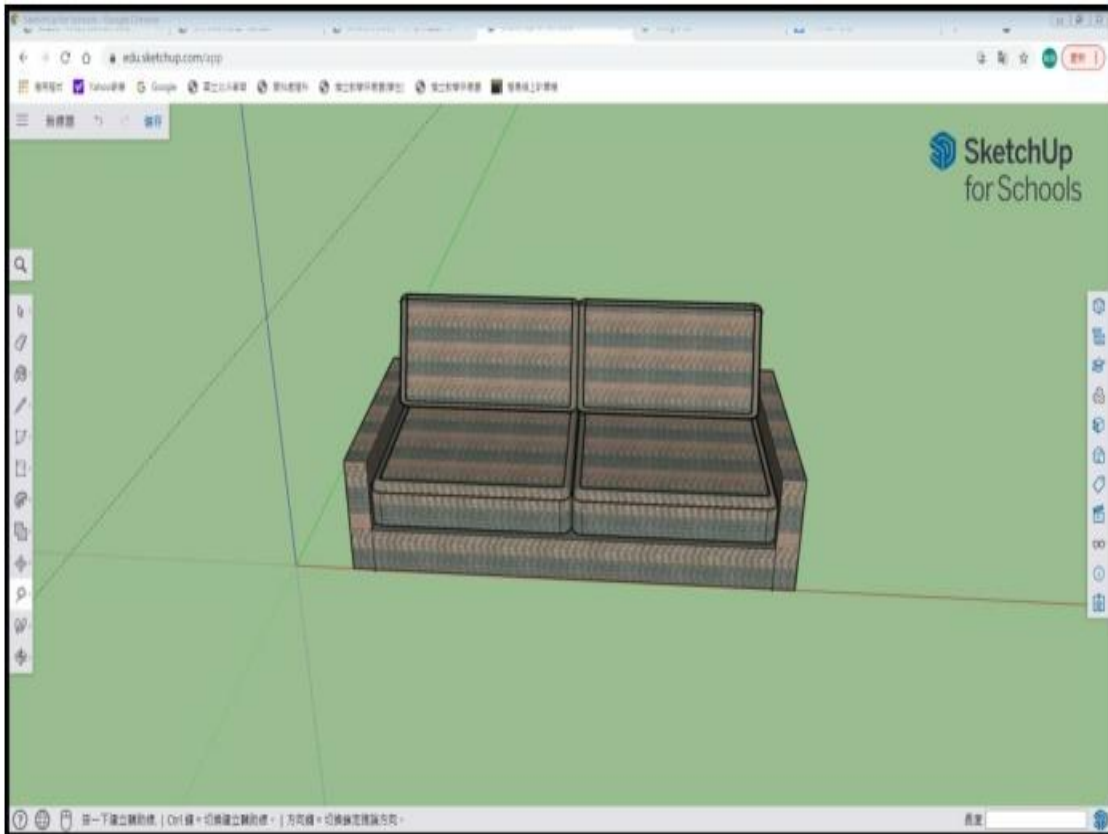


sk 作品 03 校徽

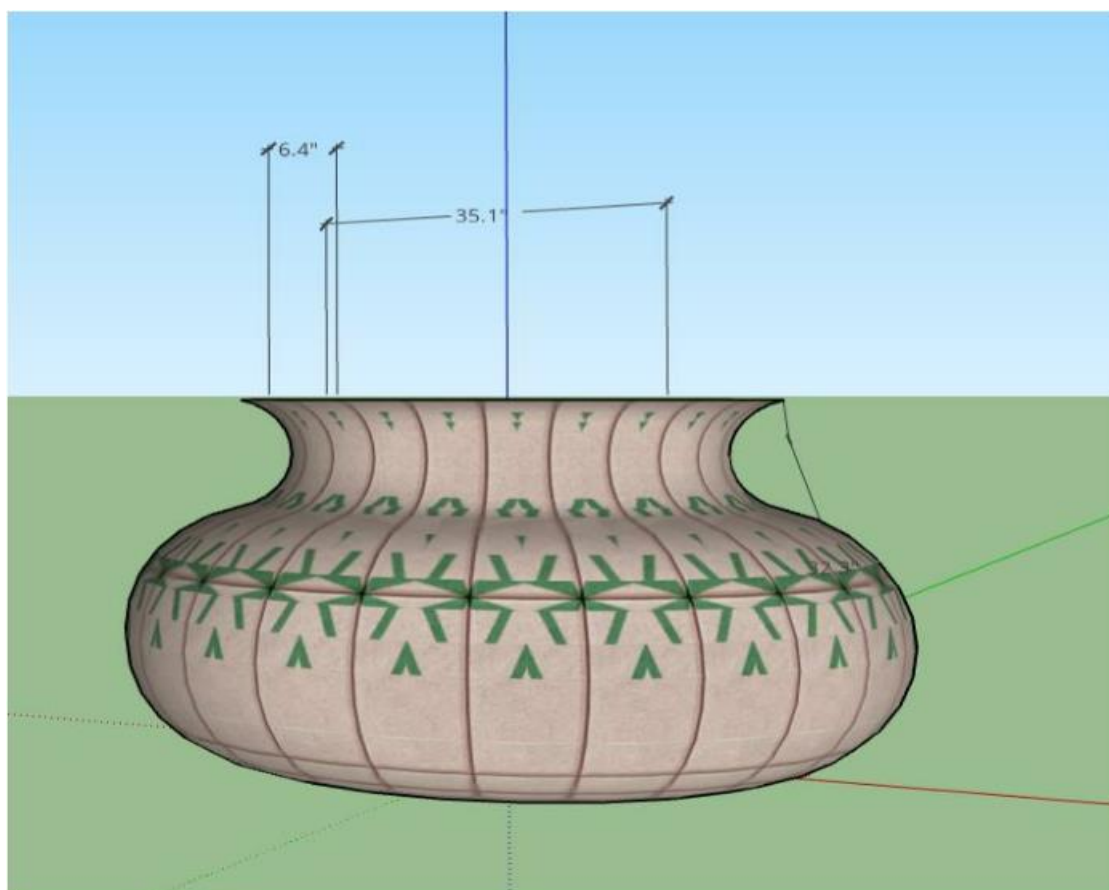
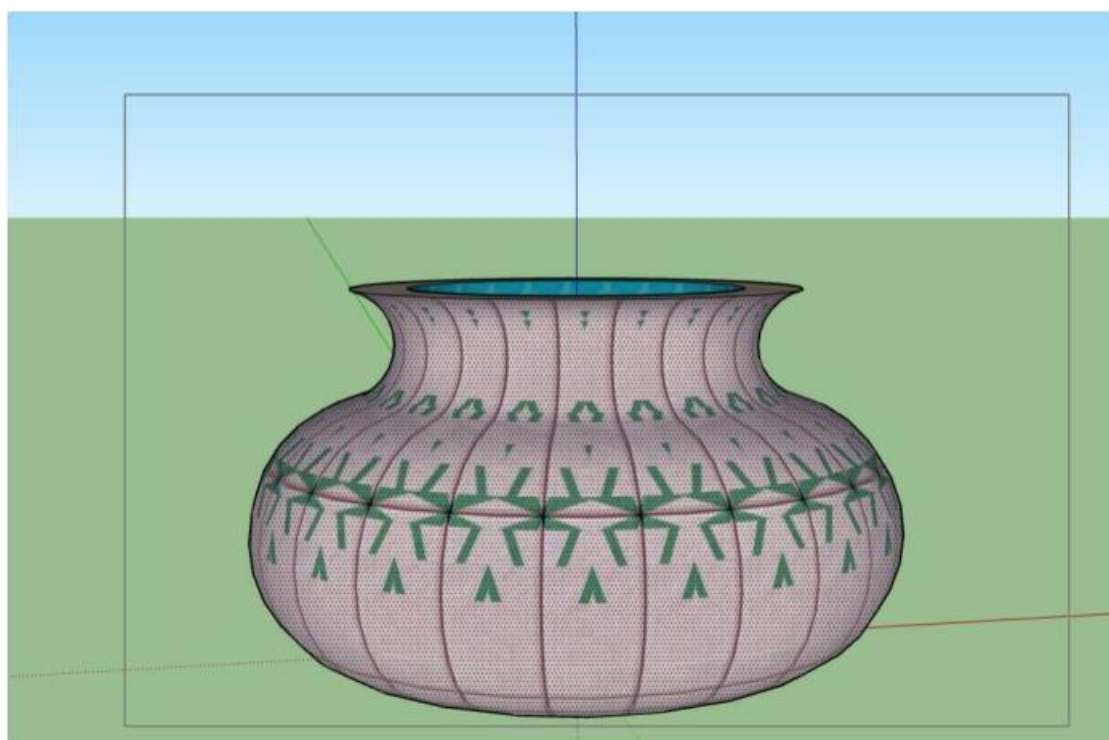


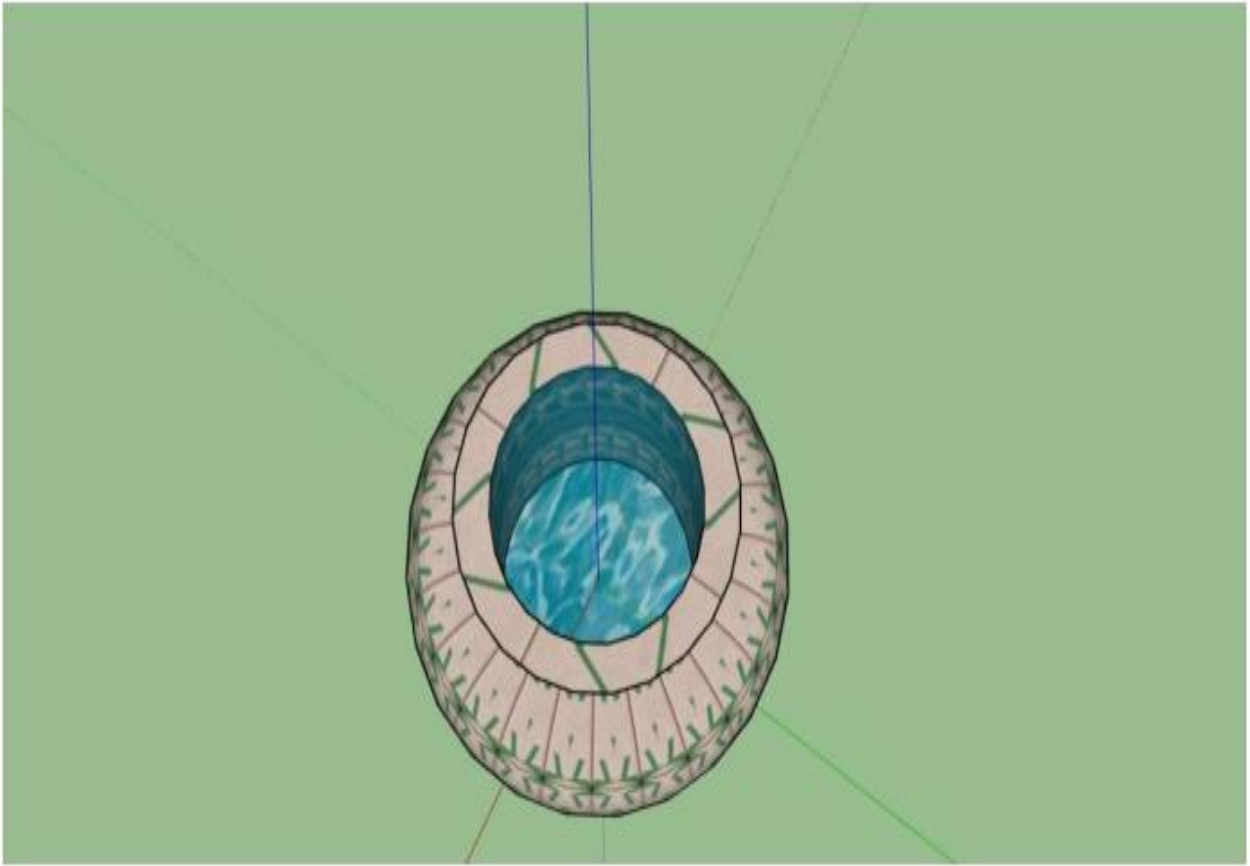


沙發

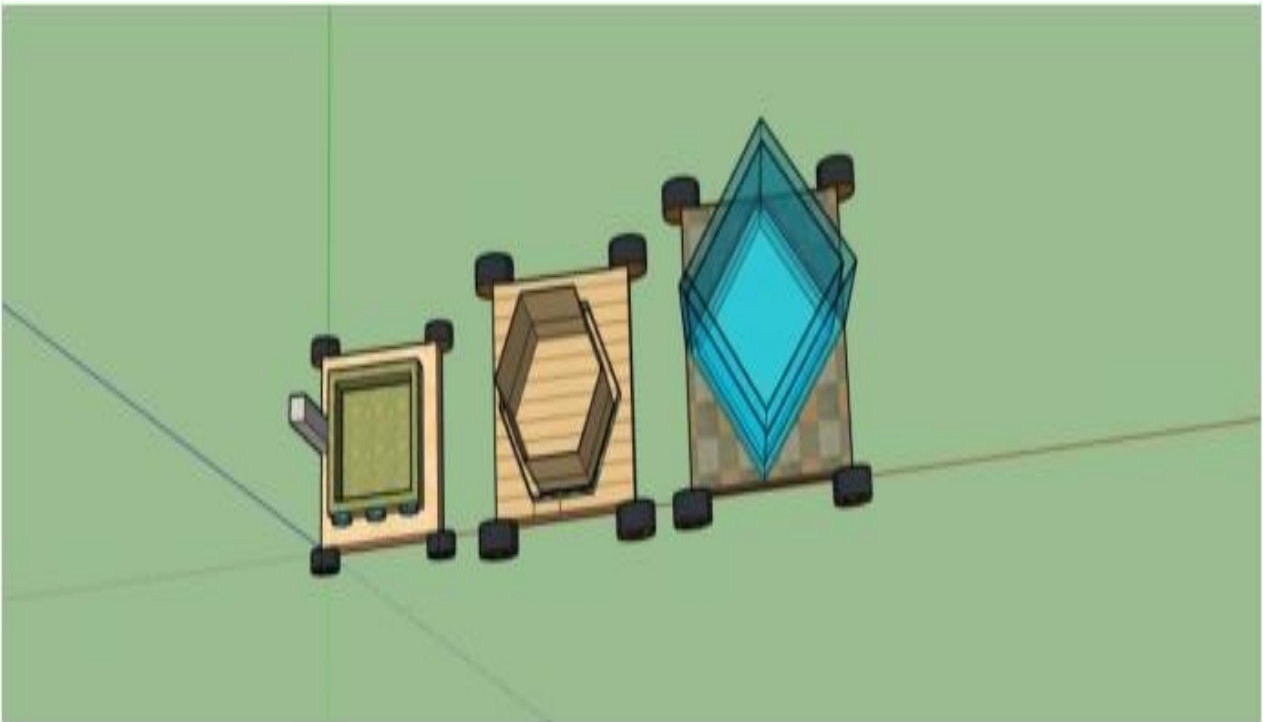


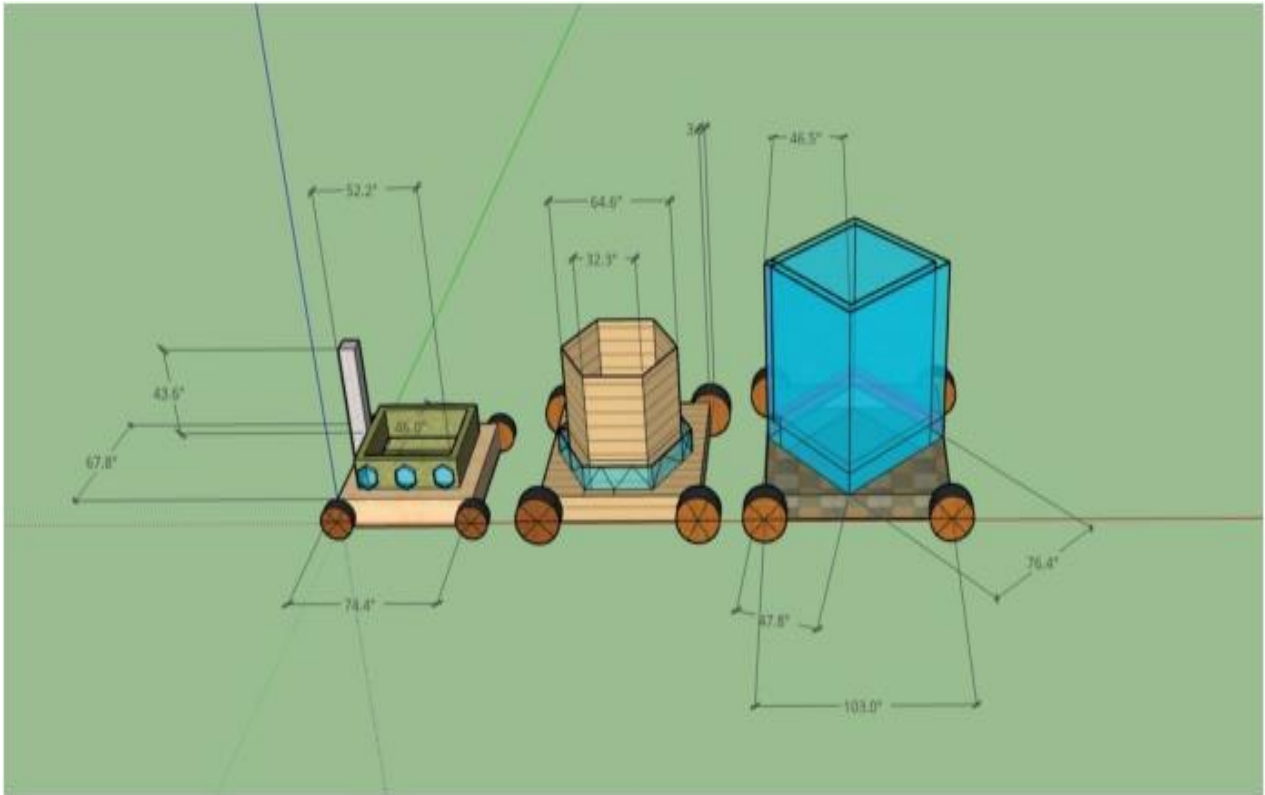
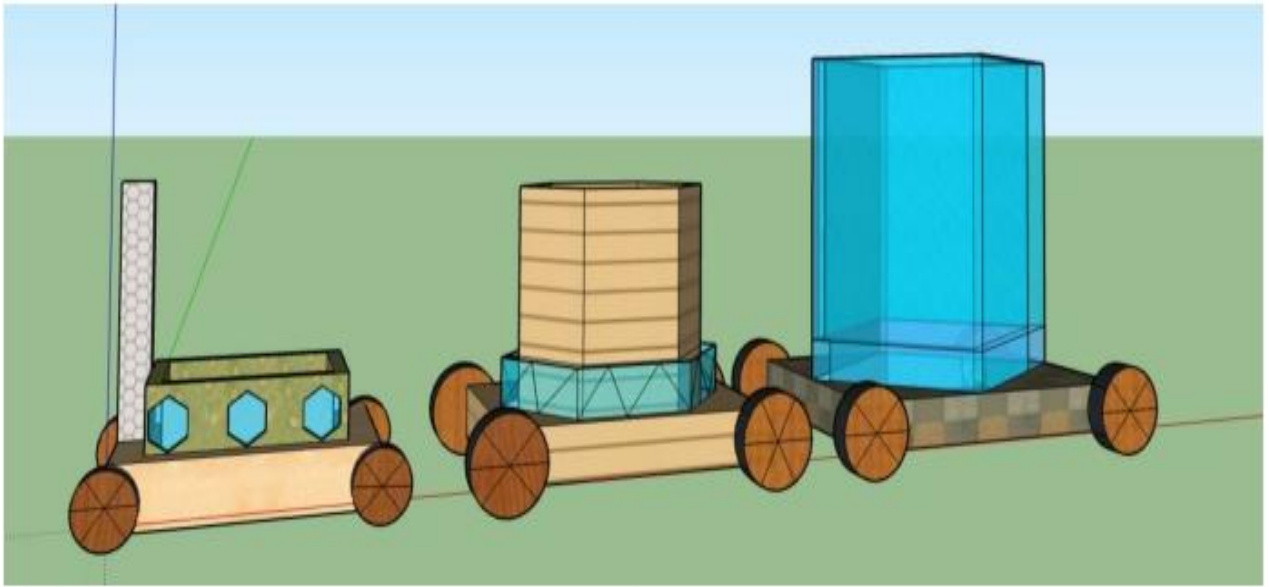
標題:花瓶



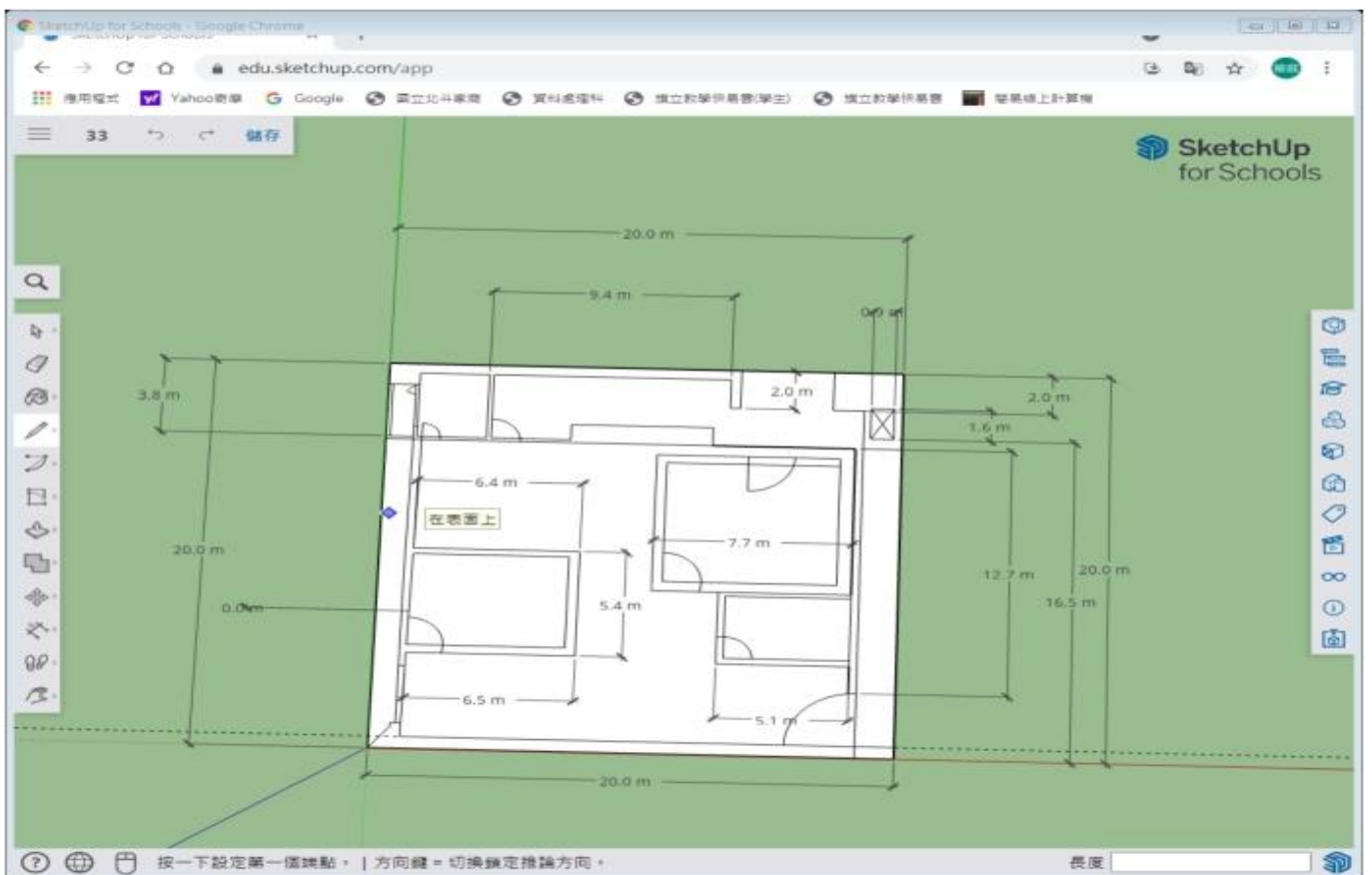
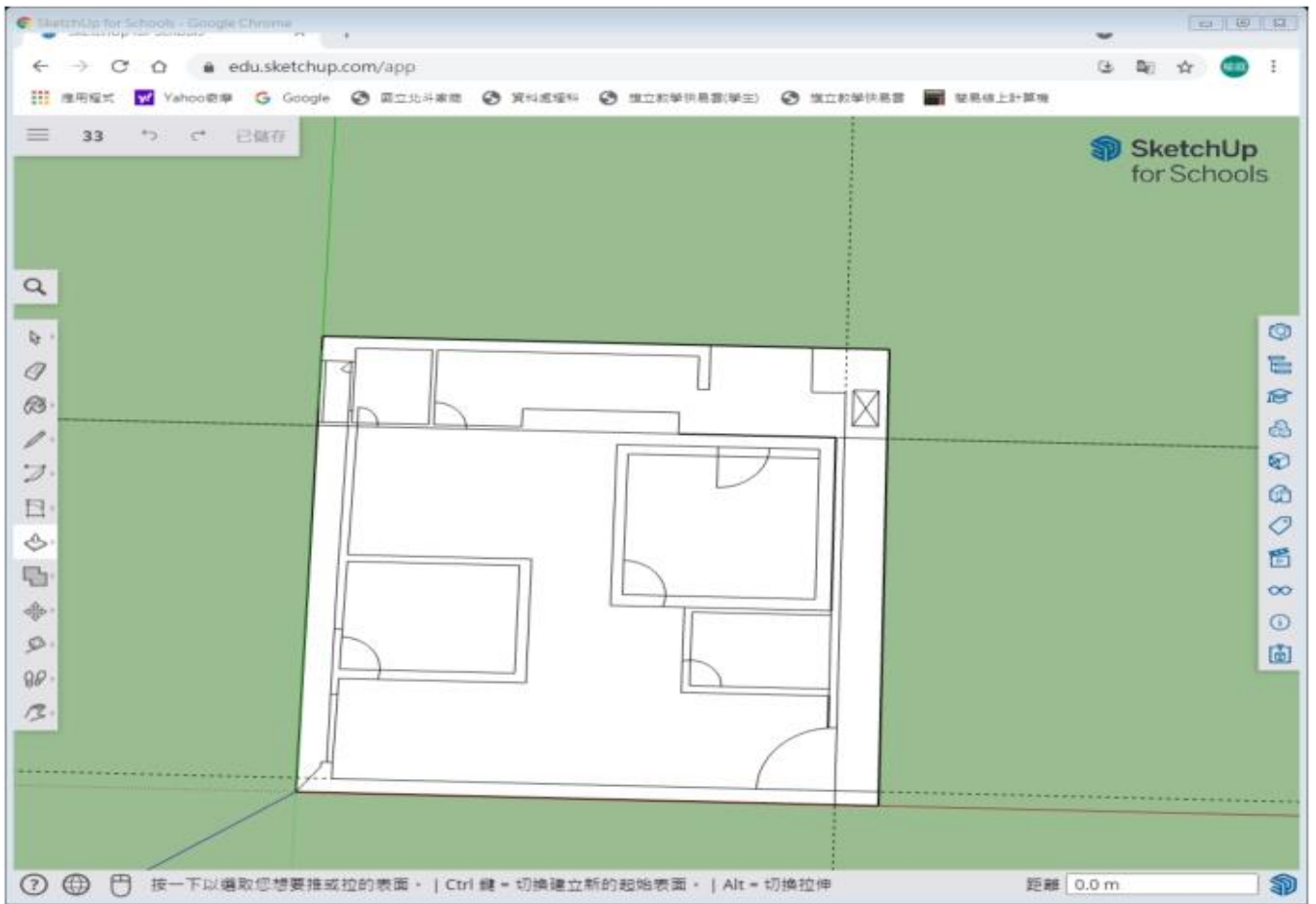


火車



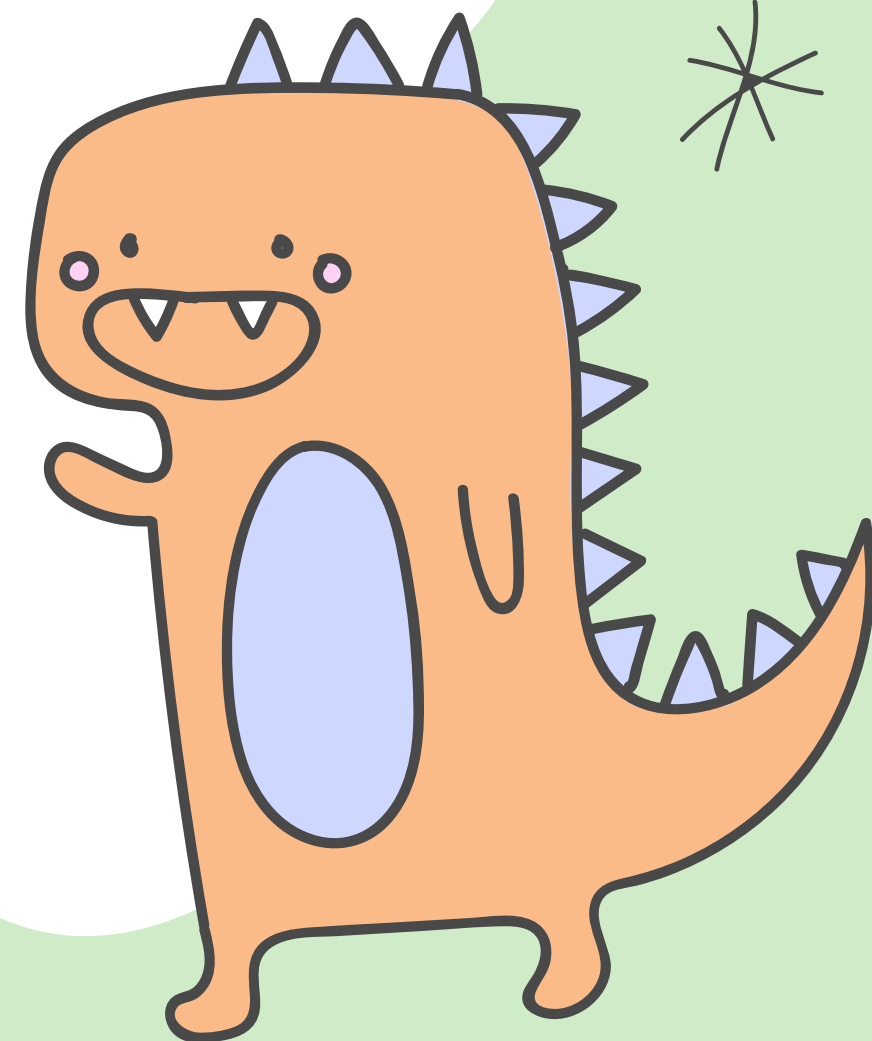
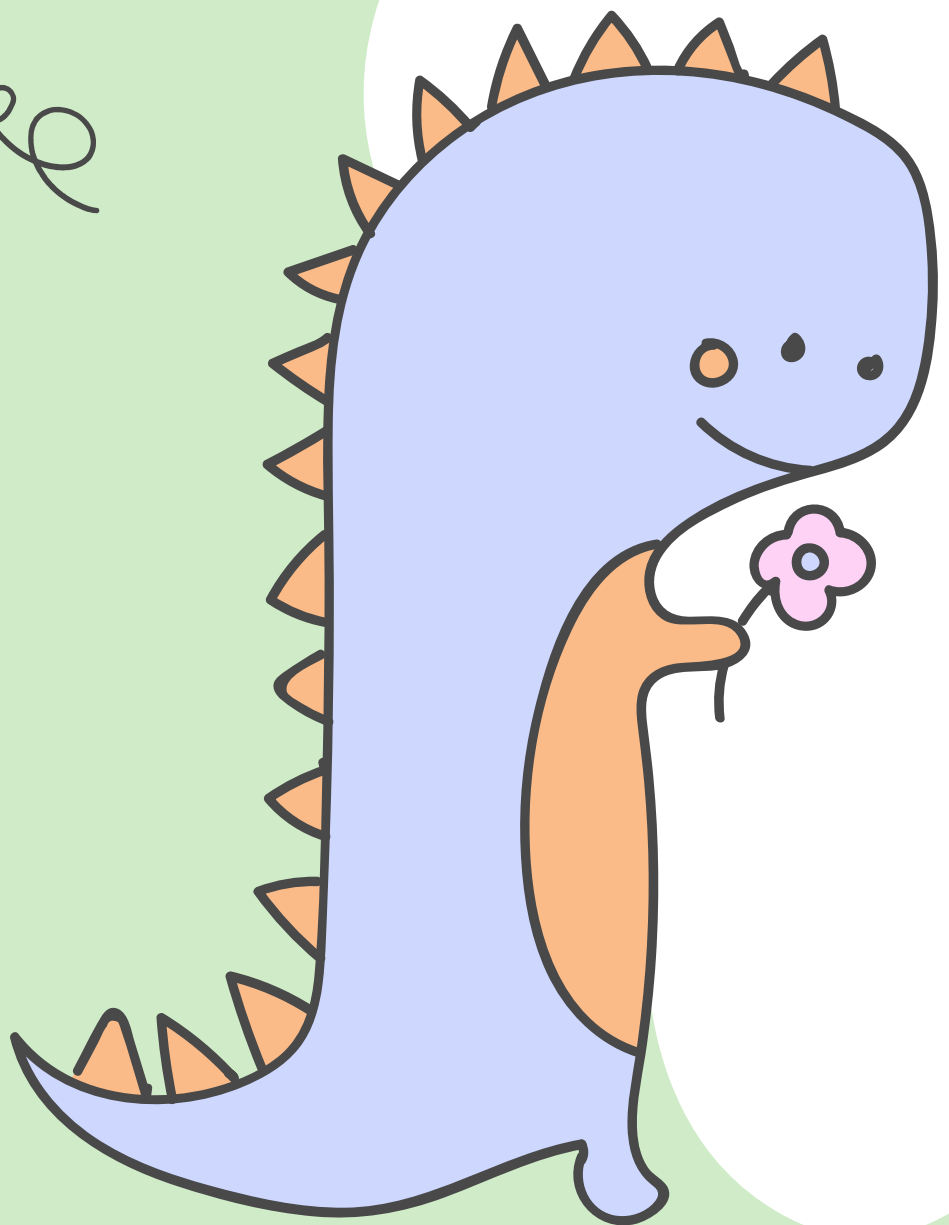


房子



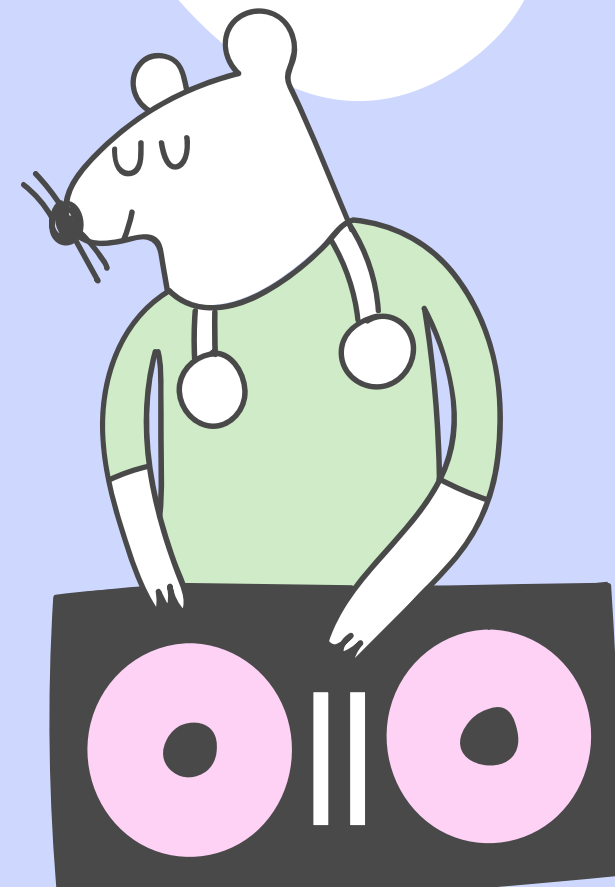
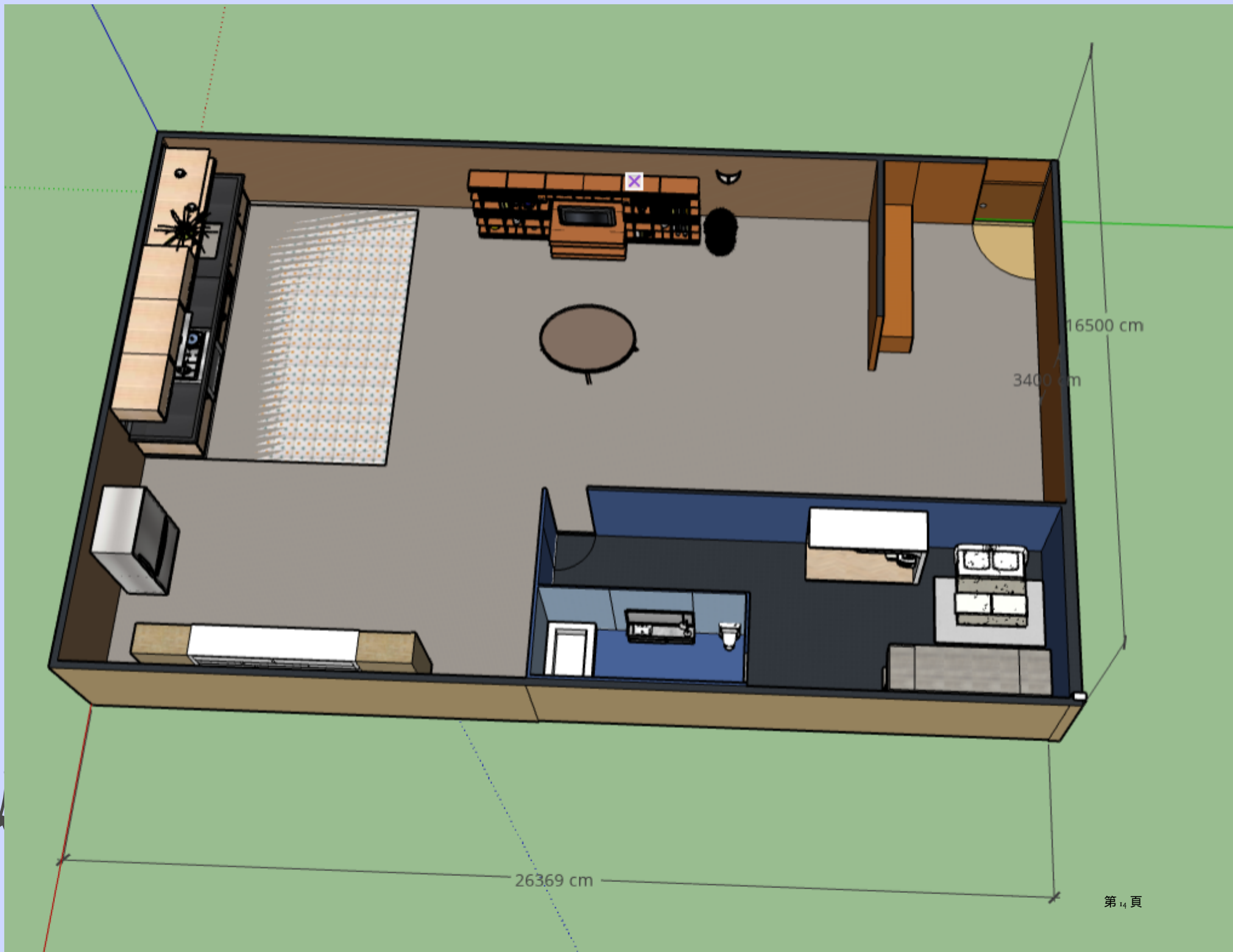
我的夢想家園

顏榆庭



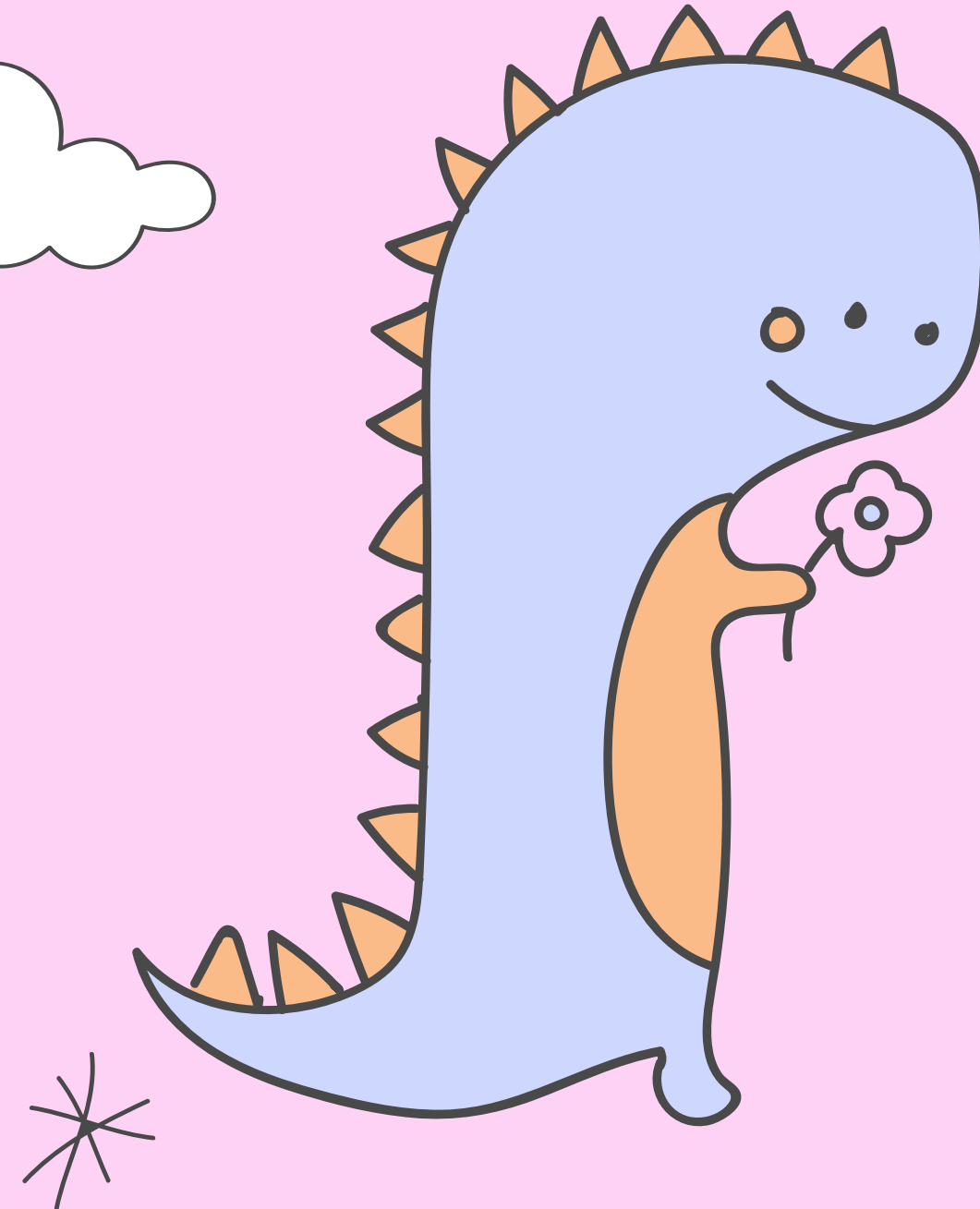
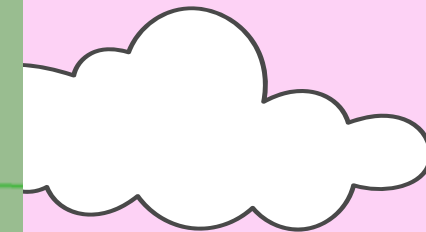
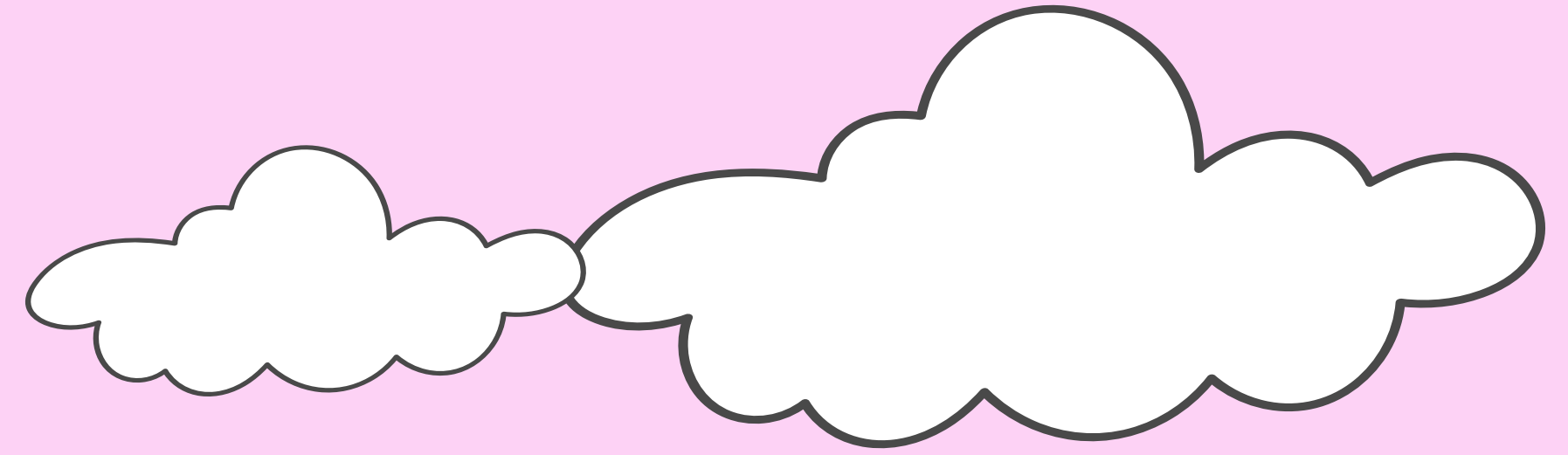
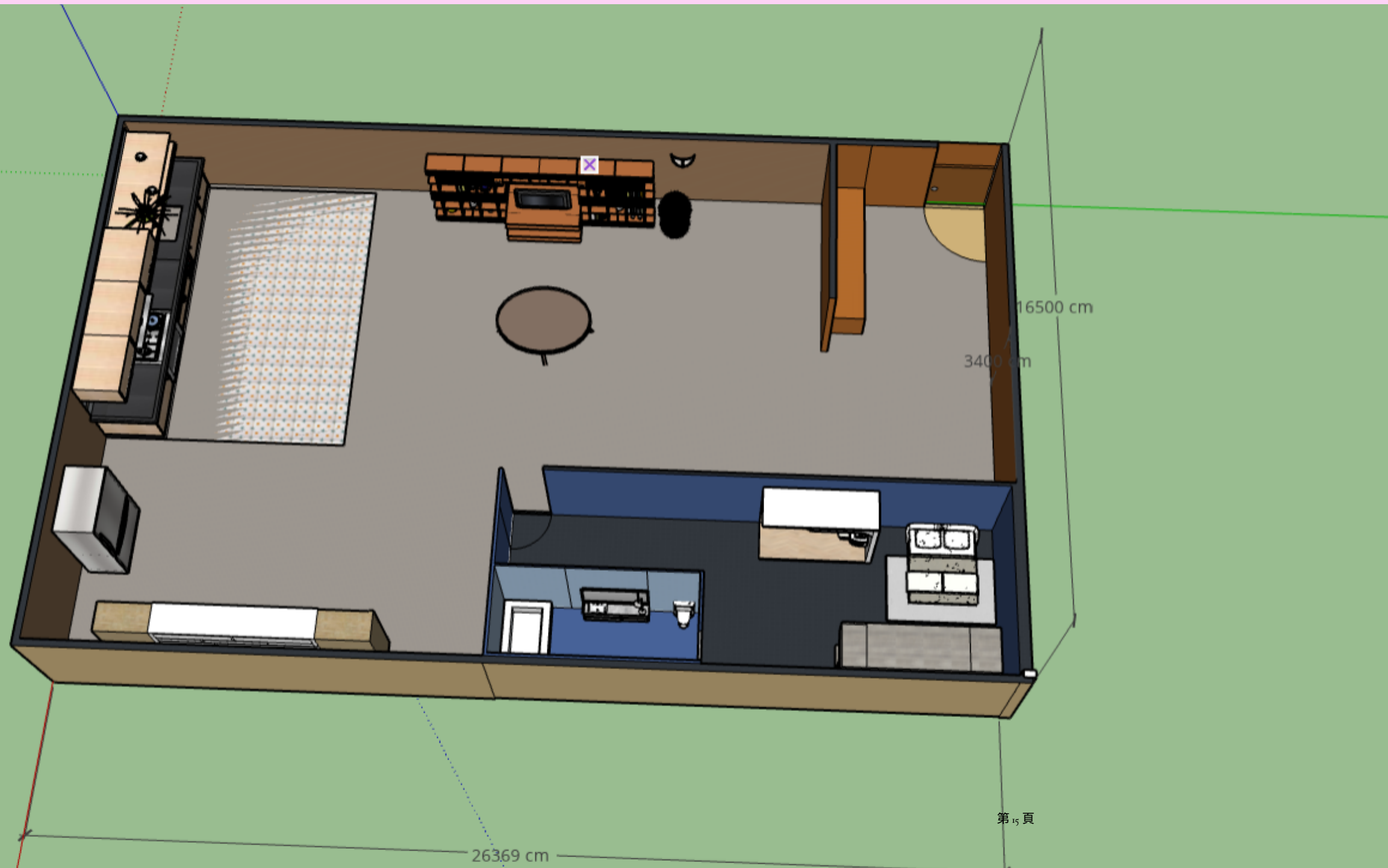
土地長、寬

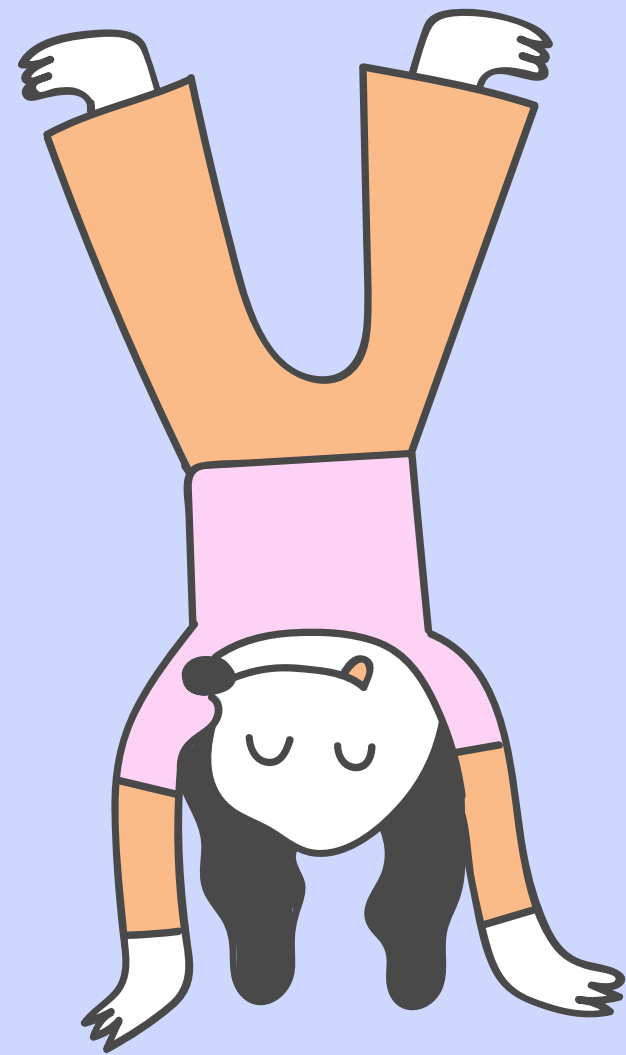
土地長26369公分，寬16500公分



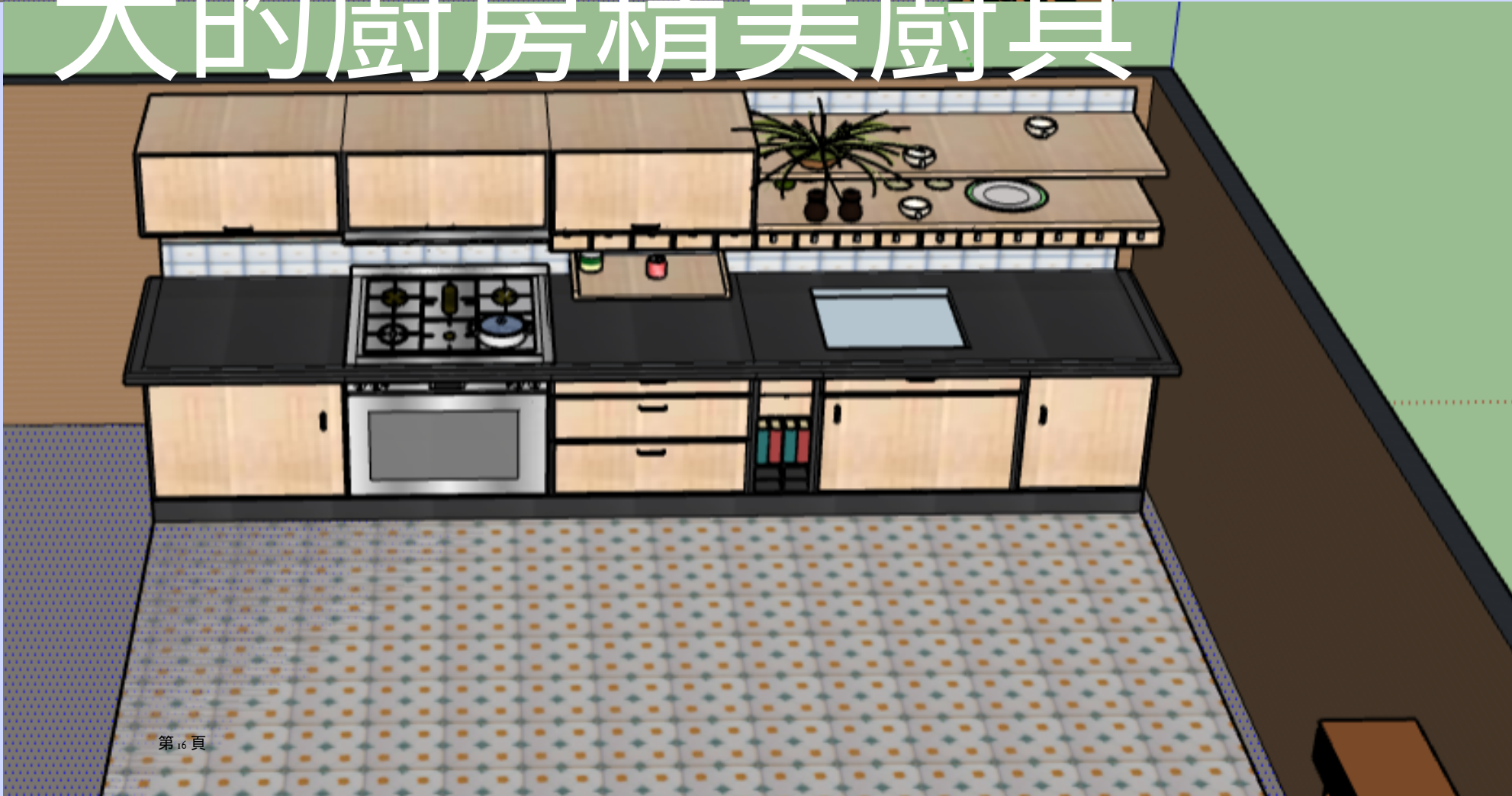
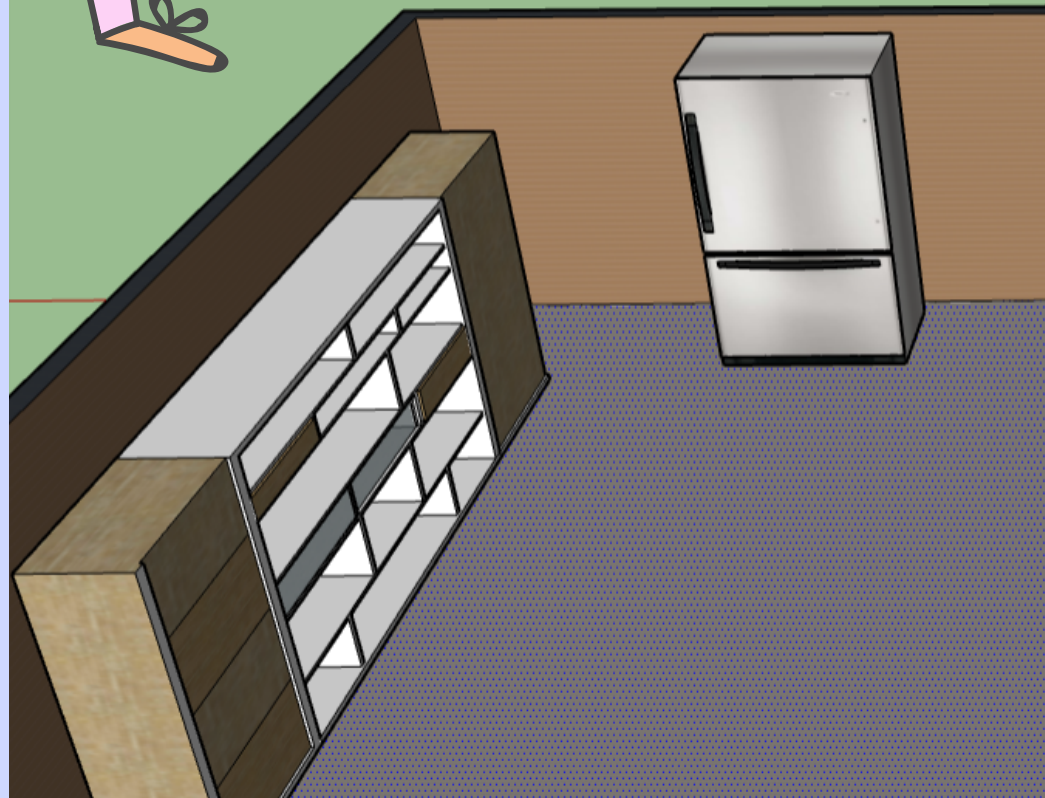
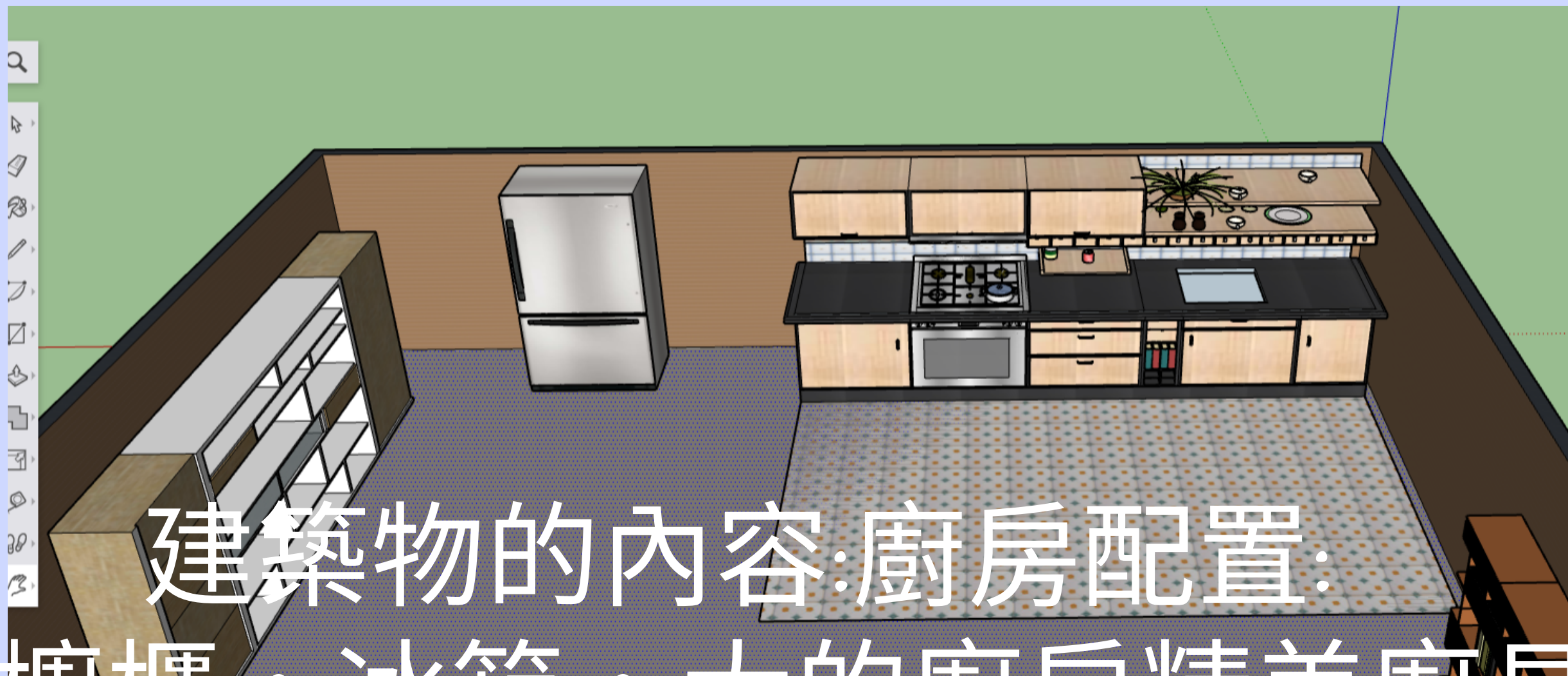
建築物的長、寬

高3400公分，土地長26369公分，寬16500公分

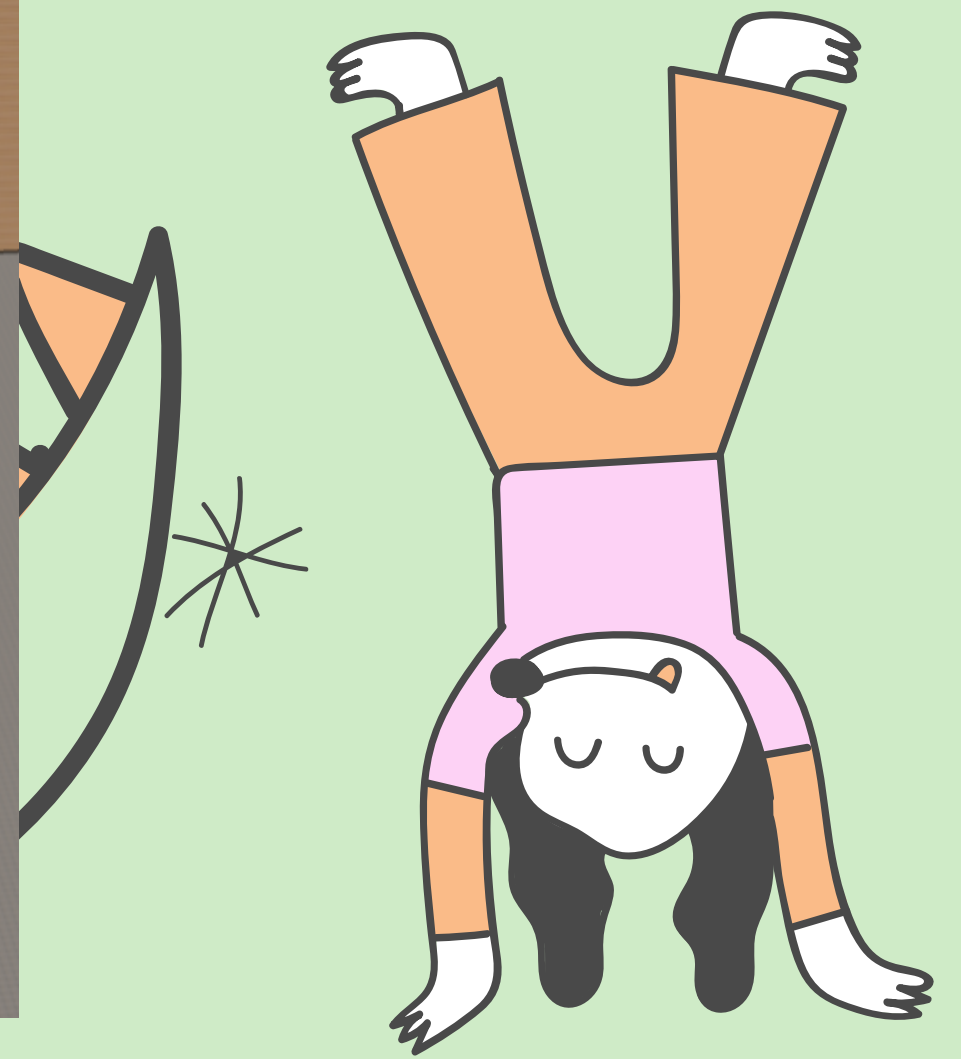
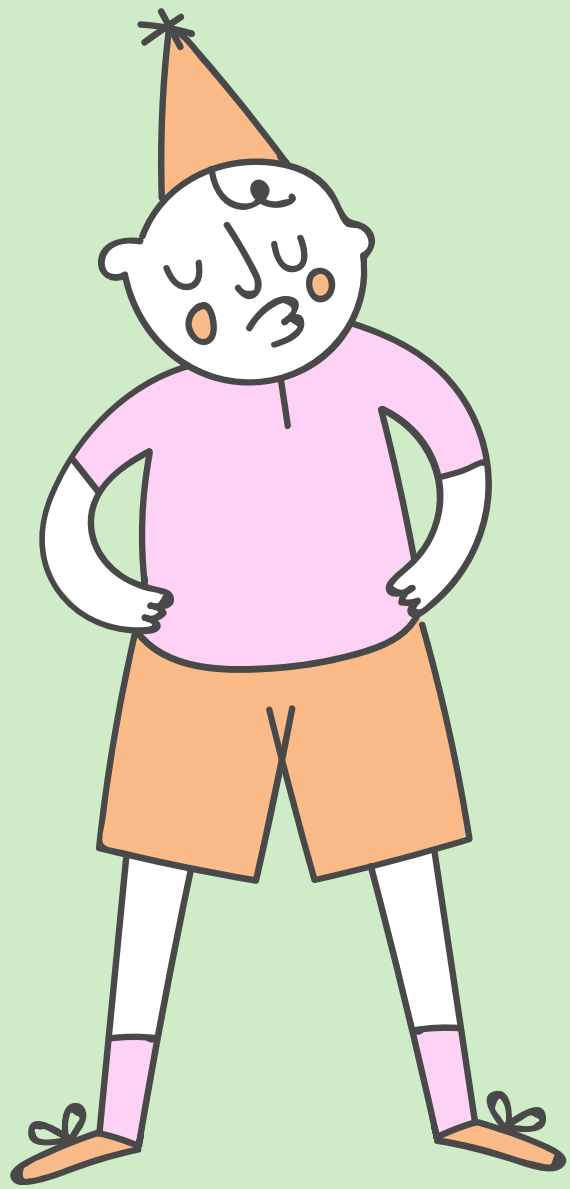
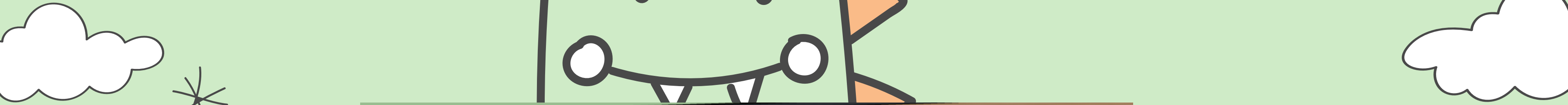




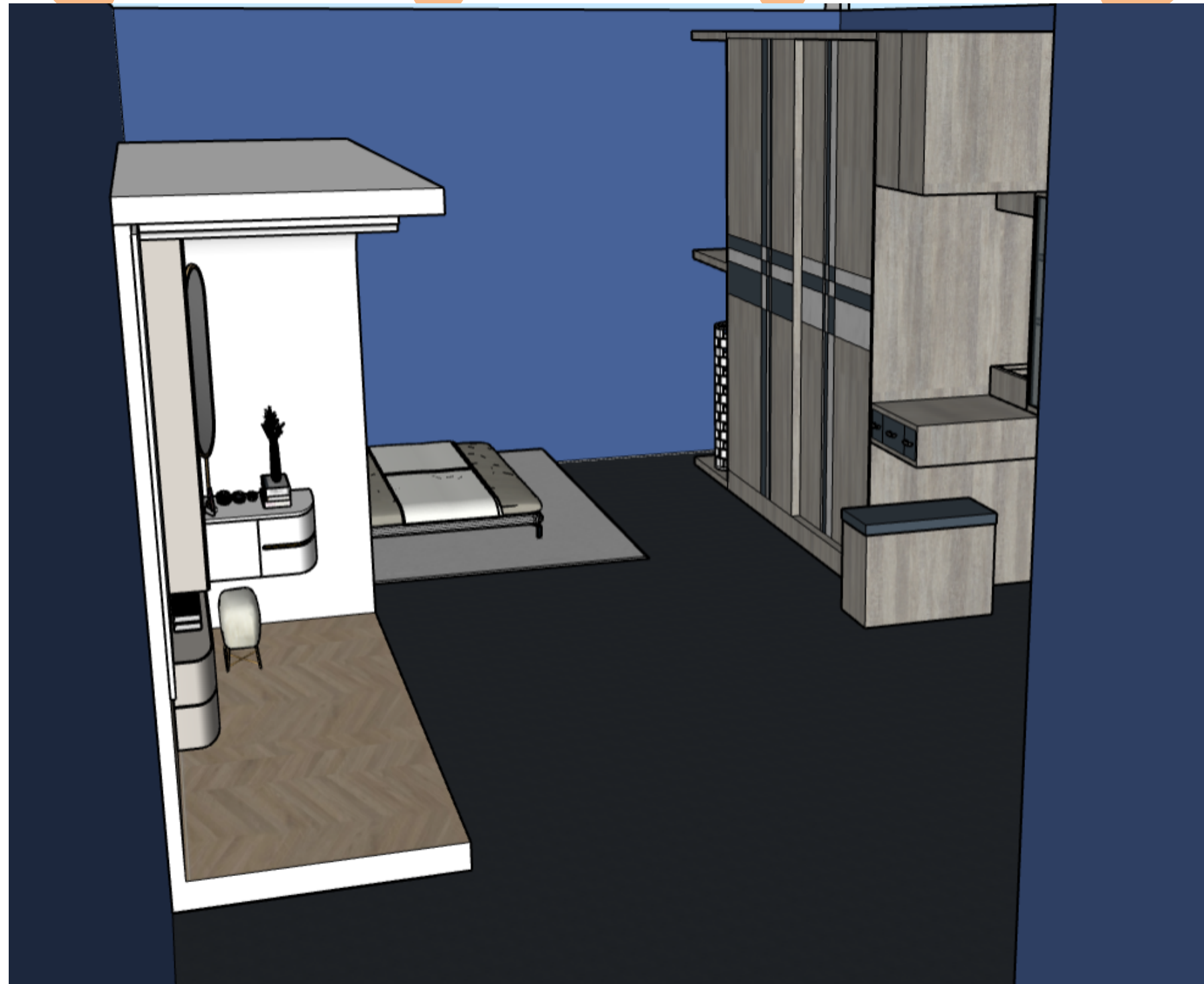
建築物的內容:廚房配置:
大櫥櫃，冰箱，大的廚房精美廚具



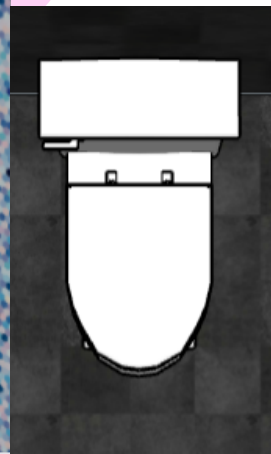
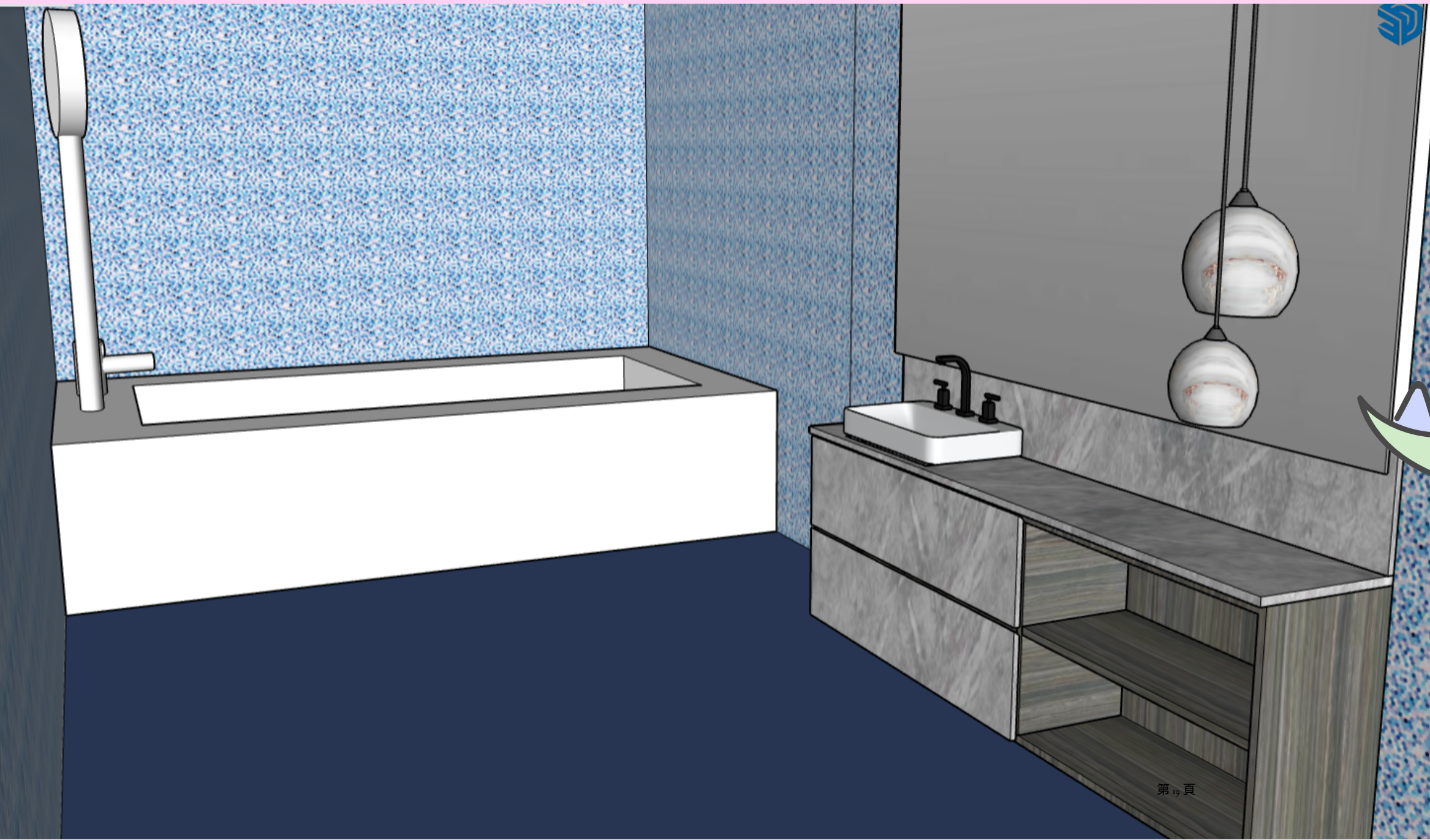
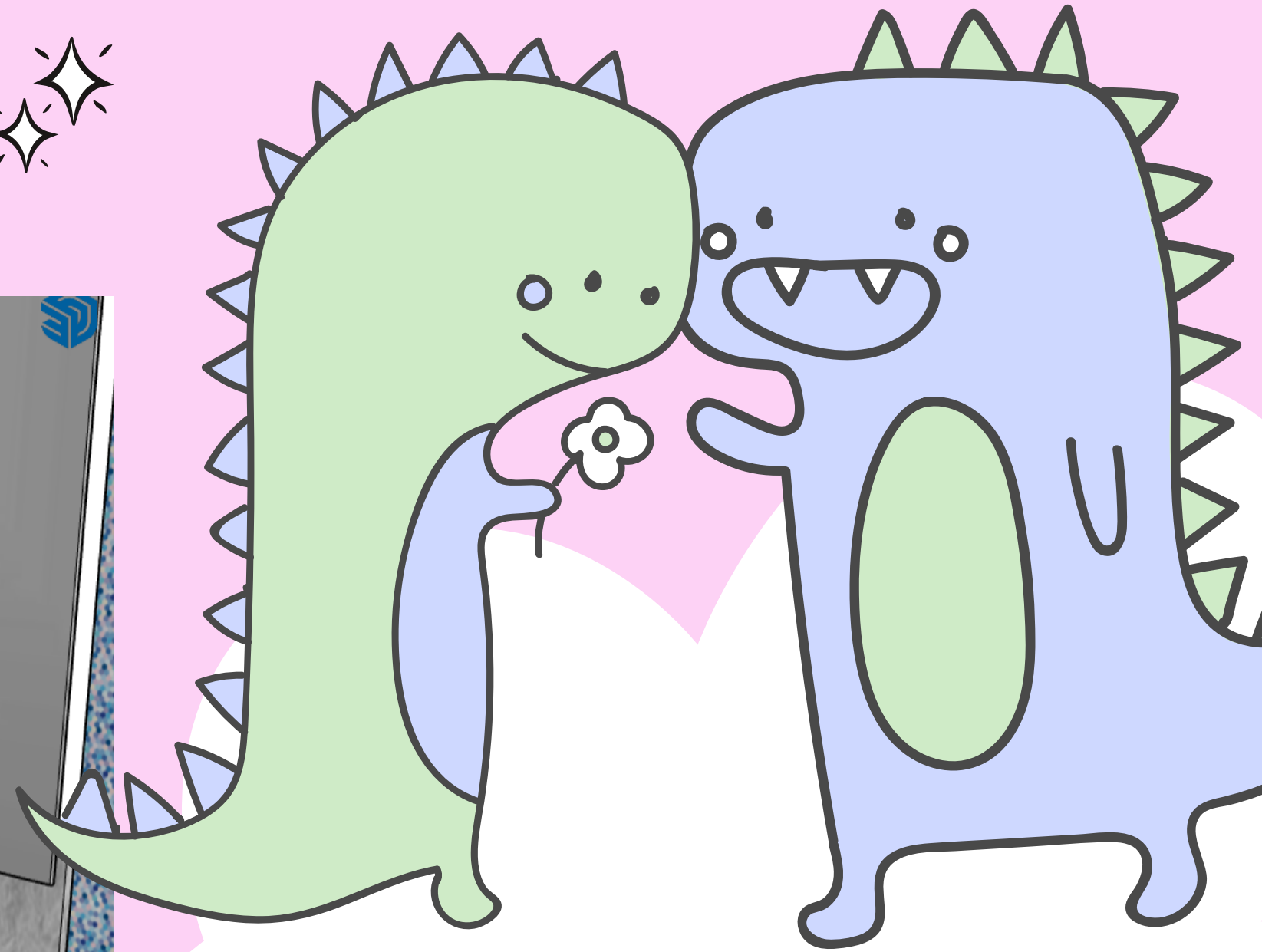
客廳配置:書櫃，電視圓桌，大電視櫃，其他雜物



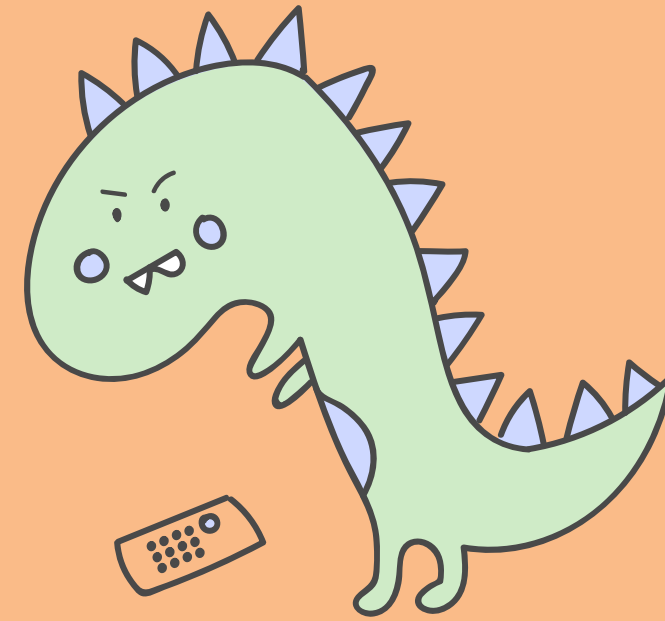
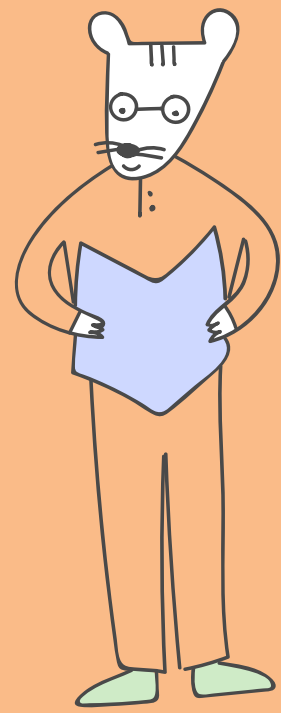
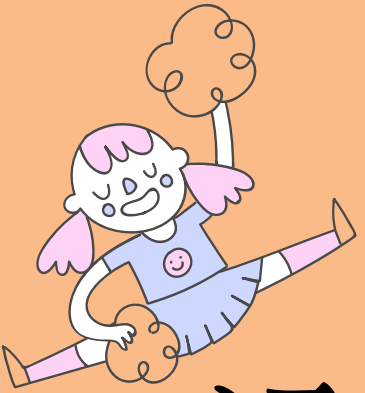
臥室配置:大衣櫃, 床, 化妝台



浴室配置:浴缸，洗手台，馬桶



心得：



這次的作業讓我
知道設計一間房子是一件不容易的事情，家具的擺設，土地的劃分，都是不容易的，長大以後希望可以蓋出夢想房子。

